

Planning and Consultation Committee Meeting

to be held at the Civic Centre, Civic Drive, Greensborough
on Tuesday 11 April 2023 commencing at 7:00pm.

Attachments

Carl Cowie
Chief Executive Officer

Thursday 7 April 2023

Distribution: Public

Civic Drive, Greensborough
PO Box 476, Greensborough 3088
Telephone 9433 3111
Facsimile 9433 3777
Website www.nillumbik.vic.gov.au
Email nillumbik@nillumbik.vic.gov.au

Nillumbik Shire Council

Attachments

COM.001/23 Confirmation of Minutes Planning and Consultation Committee Meeting held Tuesday 14 March 2023

Attachment 1 Minutes of the Planning and Consultation Committee Meeting held Tuesday 14 March 2023.....1

PCC.004/23 Draft Budget 2023-2024 Submissions

Attachment 1 Submissions and Attachments to Draft Budget 2023-2024 -Redacted..... 13

- COM.001/23 Confirmation of Minutes Planning and Consultation Committee Meeting held Tuesday 14 March 2023
- Attachment 1. Minutes of the Planning and Consultation Committee Meeting held Tuesday 14 March 2023

Planning and Consultation Committee Meeting

held at the Civic Centre, Civic Drive, Greensborough
on Tuesday 14 March 2023 commenced at 7:00pm.

Minutes

Carl Cowie
Chief Executive Officer

Friday 17 March 2023

Distribution: Public

Civic Drive, Greensborough
PO Box 476, Greensborough 3088
Telephone 9433 3111
Facsimile 9433 3777
Website www.nillumbik.vic.gov.au
Email nillumbik@nillumbik.vic.gov.au



COM.001/23 **Confirmation of Minutes Planning and Consultation Committee Meeting held Tuesday 14 March 2023**

Attachment 1. **Minutes of the Planning and Consultation Committee Meeting held Tuesday 14 March 2023**

Planning and Consultation Committee Meeting Minutes

14 March 2023

Nillumbik Shire Council

Contents		
<hr/>		
1.	Welcome by the Chair	1
2.	Acknowledgement of Country	1
3	Apologies	1
4	Disclosure of conflicts of interest	1
5.	Confirmation of Minutes	2
	Confirmation of Minutes	
	COM.001/23 Confirmation of Minutes Planning and Consultation Committee Meeting held Tuesday 14 February 2023	2
	Consultation Matters	
	PCC.002/23 ALGA National General Assembly 2023 - Nillumbik Motions	3
	PCC.003/23 Endorsement of Motions for the Municipal Association of Victoria State Council Meeting - 19 May 2023	7
7.	Supplementary and urgent business	9
8.	Confidential reports	9
9.	Close of Meeting	9

Nillumbik Shire Council

**Minutes of the Planning and Consultation Committee Meeting held
Tuesday 14 March 2023. The meeting commenced at 7:00pm.**

Councillors present:

Cr Ben Ramcharan	Sugarloaf Ward (Mayor)
Cr Richard Stockman	Blue Lake Ward
Cr Karen Egan	Bunjil Ward
Cr Peter Perkins	Ellis Ward (Chairperson Planning Matters)
Cr Frances Eyre	Swipers Gully Ward (Chairperson Consultation Matters)
Cr Geoff Paine	Wingrove Ward (Deputy Mayor)

Officers in attendance:

Carl Cowie	Chief Executive Officer
Vince Lombardi	Chief Financial Officer / Acting Director Operations and Infrastructure
Blaga Naumoski	Director Governance and Communications
Corrienne Nichols	Director Community Services
Jeremy Livingston	Executive Manager Business Transformation and Performance
Daniel Tarquinio	Manager Information Technology
Katia Croce	Governance Lead

1. Welcome by the Chair

2. Acknowledgement of Country

Acknowledgement of Country was read by the Chairperson Consultation Matters
Cr Frances Eyre.

3 Apologies

An apology for this meeting has been received from Cr Natalie Duffy.

Committee Resolution

MOVED: Cr Karen Egan

SECONDED: Cr Ben Ramcharan

That the apology from Cr Natalie Duffy be noted.

CARRIED UNANIMOUSLY

4 Disclosure of conflicts of interest

Nil

COM.001/23 Confirmation of Minutes Planning and Consultation Committee Meeting held Tuesday 14 March 2023

Attachment 1. Minutes of the Planning and Consultation Committee Meeting held Tuesday 14 March 2023

Planning and Consultation Committee Minutes

14 March 2023

5. Confirmation of Minutes

COM.001/23 Confirmation of Minutes Planning and Consultation Committee Meeting held Tuesday 14 February 2023

Confirmation of the minutes of the Planning and Consultation Committee Meeting held on Tuesday 14 February 2023.

Committee Resolution

MOVED: Cr Geoff Paine

SECONDED: Cr Richard Stockman

That the Committee (acting under delegation from Council) the minutes of the Planning and Consultation Committee Meeting held on Tuesday 14 February 2023 (**Attachment 1**).

CARRIED UNANIMOUSLY

6. Officers' reports

PCC.002/23 ALGA National General Assembly 2023 - Nillumbik Motions

Item: Consultation Matter

Distribution: Public

Manager: Blaga Naumoski, Director Governance and Communications

Author: Katia Croce, Governance Lead

Summary

The Australian Local Government Association (ALGA), National General Assembly (NGA) provides the opportunity for councils throughout Australia to contribute to the development of national local government policy and receive updates on the major policy issues facing local government. The 29th NGA to be held in Canberra from 13-15 June 2023, this year's theme being 'Our Communities Our Future'. The ALGA Secretariat has prepared a short discussion paper (**Attachment 1**) to assist councils to identify motions that address the theme of the 2023 NGA. The NGA is a major event and typically attracts more than 600 Mayors, Councillors and Senior Officers from councils across Australia.

The NGA is an opportunity for individual councils to identify matters of national relevance to the sector, influence the future direction of our Council and our community and to submit Motion to seek support at the NGA for these matters to be considered by NGA as national policy.

This report seeks endorsement of the Nillumbik Motions (**Attachment 2**) to be put forward to the ALGA, NGA in June 2023. Motions submitted will be reviewed by a committee of the ALGA Board as well as by State and Territory Local Government Associations to determine their eligibility for inclusion in the NGA Business Papers. When reviewing motions, the committee considers the importance and relevance of the issue to Local Government.

Motions need to be submitted no later than 24 March 2023. Motions that are carried by the NGA become resolutions. These resolutions are then considered by the ALGA Board when setting national local government policy and will also feed into the Australian Council of Local Government processes.

Recommendation

That the Committee (acting under delegation from Council) resolves to:

1. Reschedule the Planning and Consultation Committee meeting from Tuesday 13 June 2023 to Tuesday 6 June 2023 to be held in the Council Chamber at Civic Drive, Greensborough at 7pm to allow Councillors to attend the Australian Local Government Association, National General Assembly.
2. Requests officers to update the 2022/2023 schedule of meetings and Council website with the revised Council meeting dates accordingly.
3. Adopts and lodged the following motions to the Australian Local Government Association, National General Assembly to be held in Canberra on 13-15 June 2023:
 - i. *"The Australian Local Government Association calls on the Australian Government to provide direct support to local government in our important work to protect and manage unique plants, animals and habitats and to manage the threatening processes that negatively impact our biodiversity by:*

6. Consultation Matters

PCC.002/23 ALGA National General Assembly 2023 - Nillumbik Motions

- a. *Providing adequate and long-term grant funding for on-ground action, monitoring and collaboration to enable landscape-scale biodiversity outcomes across all land tenures.*
- b. *Supporting opportunities to increase and diversify environmental management and restoration employment*
- c. *Supporting local government programs that promote a stronger connection between people and nature, improve the way nature is cared for, and build and share knowledge.*
- ii. *The Australian Local Government Association calls on the Australian Government to:*
 - a. *Ensure the national energy electricity grid can support our ambitious net zero targets which require rapid transition to all-electric homes, transport and industry based on renewable energy.*
 - b. *Legislate ambitious climate targets that align with meeting international Paris Agreement Protocols to keep warming below 2°C global temperature rise. That is, setting net zero emissions for Australia by 2035 in collaboration with local government emissions targets.*
- iii. *The Australian Local Government Association calls on the Australian Government to provide funding for the delivery of flexible and dynamic youth outreach and support services for young people aged 12-25 years.*
- iv. *The Australian Local Government Association calls on the Australian Government to provide immediate short term, adequate funding to support the spike in Regional Assessment Services."*

Motion

MOVED: Cr Ben Ramcharan

SECONDED: Cr Geoff Paine

That the Committee (acting under delegation from Council) resolves to:

- 1. Reschedule the Planning and Consultation Committee meeting from Tuesday 13 June 2023 to Tuesday 6 June 2023 to be held in the Council Chamber at Civic Drive, Greensborough at 7pm to allow Councillors to attend the Australian Local Government Association, National General Assembly.
- 2. Requests officers to update the 2022/2023 schedule of meetings and Council website with the revised Council meeting dates accordingly.
- 3. Adopts and **lodges** the following motions to the Australian Local Government Association, National General Assembly to be held in Canberra on 13-15 June 2023:
 - i. *"The Australian Local Government Association calls on the Australian Government to provide direct support to local government in our important work to protect and manage unique plants, animals and habitats and to manage the threatening processes that negatively impact our biodiversity by:*

6. Consultation Matters

PCC.002/23 ALGA National General Assembly 2023 - Nillumbik Motions

- a. *Providing adequate and long-term grant funding for on-ground action, monitoring and collaboration to enable landscape-scale biodiversity outcomes across all land tenures.*
- b. *Supporting opportunities to increase and diversify environmental management and restoration employment*
- c. *Supporting local government programs that promote a stronger connection between people and nature, improve the way nature is cared for, and build and share knowledge.*
- ii. *The Australian Local Government Association calls on the Australian Government to:*
 - a. *Ensure the national energy electricity grid can support our ambitious net zero targets which require rapid transition to all-electric homes, transport and industry based on renewable energy.*
 - b. *Legislate ambitious climate targets that align with meeting international Paris Agreement Protocols to keep warming below 2°C global temperature rise. That is, setting net zero emissions for Australia by 2035 in collaboration with local government emissions targets.*
- iii. *The Australian Local Government Association calls on the Australian Government to provide funding for the delivery of flexible and dynamic youth outreach and support services for young people aged 12-25 years.*
- iv. *The Australian Local Government Association calls on the Australian Government to provide immediate short term, adequate funding to support the spike in Regional Assessment Services."*

THE MOTION WAS PUT TO THE VOTE AND CARRIED AND BECAME THE COMMITTEE RESOLUTION AS FOLLOWS:

Committee Resolution

MOVED: Cr Ben Ramcharan

SECONDED: Cr Geoff Paine

That the Committee (acting under delegation from Council) resolves to:

- 1. Reschedule the Planning and Consultation Committee meeting from Tuesday 13 June 2023 to Tuesday 6 June 2023 to be held in the Council Chamber at Civic Drive, Greensborough at 7pm to allow Councillors to attend the Australian Local Government Association, National General Assembly.
- 2. Requests officers to update the 2022/2023 schedule of meetings and Council website with the revised Council meeting dates accordingly.
- 3. Adopts and lodges the following motions to the Australian Local Government Association, National General Assembly to be held in Canberra on 13-15 June 2023:
 - i. *"The Australian Local Government Association calls on the Australian Government to provide direct support to local government in our important*

6. Consultation Matters

PCC.002/23 ALGA National General Assembly 2023 - Nillumbik Motions

work to protect and manage unique plants, animals and habitats and to manage the threatening processes that negatively impact our biodiversity by:

- a. *Providing adequate and long-term grant funding for on-ground action, monitoring and collaboration to enable landscape-scale biodiversity outcomes across all land tenures.*
- b. *Supporting opportunities to increase and diversify environmental management and restoration employment*
- c. *Supporting local government programs that promote a stronger connection between people and nature, improve the way nature is cared for, and build and share knowledge.*
- ii. *The Australian Local Government Association calls on the Australian Government to:*
 - a. *Ensure the national energy electricity grid can support our ambitious net zero targets which require rapid transition to all-electric homes, transport and industry based on renewable energy.*
 - b. *Legislate ambitious climate targets that align with meeting international Paris Agreement Protocols to keep warming below 2°C global temperature rise. That is, setting net zero emissions for Australia by 2035 in collaboration with local government emissions targets.*
- iii. *The Australian Local Government Association calls on the Australian Government to provide funding for the delivery of flexible and dynamic youth outreach and support services for young people aged 12-25 years.*
- iv. *The Australian Local Government Association calls on the Australian Government to provide immediate short term, adequate funding to support the spike in Regional Assessment Services."*

CARRIED UNANIMOUSLY

6. Officers' reports

PCC.003/23 Endorsement of Motions for the Municipal Association of Victoria State Council Meeting - 19 May 2023

Item: Consultation Matter

Distribution: Public

Manager: Blaga Naumoski, Director Governance and Communications

Author: Katia Croce, Governance Lead

Summary

The Municipal Association of Victoria (MAV) State Council meets to consider matters of state-wide significance. The next State Council meeting is scheduled for Friday 19 May 2023. The deadline for motions to be submitted for consideration at the 2023 MAV State Council Meeting is Monday 20 March 2023.

Motions submitted must have state-wide significance or relevance across the Victorian Local Government sector and be related to issues and initiatives that affect the livelihood and wellbeing of the Nillumbik community.

This report is seeking Council endorsement to lodge the three (3) motions (**Attachment 1**) to the 2023 MAV State Council Meeting prior to the deadline of 20 March 2023.

Committee Resolution

MOVED: Cr Peter Perkins

SECONDED: Cr Karen Egan

That the Committee (acting under delegation from Council):

1. Resolves to adopt the following three (3) motions to the Municipal Association of Victoria's State Council Meeting to be held on 19 May 2023:

- a) *That the MAV seek funding to improve mental health services by increasing support for the delivery of flexible and dynamic youth outreach and support services with an increased focus on mental health prevention.*
- b) *That the MAV:*
 - *advocate for expanded capital funding for kindergarten infrastructure to ensure that eligibility:*
 - i. *Recognises individual needs and usage patterns of funded kindergarten programs across different LGAs*
 - ii. *Considers the ability of non-growth areas to expand facilities with limited land availability*
 - iii. *Funding streams and associated agreements offered by the State can work in partnership with each other to enable larger projects to be co-funded*
 - *advocate that the strategy applied for infrastructure planning for funded 3 year old kindergarten planning be reconsidered and a new approach be developed to plan for future infrastructure for expanded 4 year old kindergarten.*

COM.001/23 Confirmation of Minutes Planning and Consultation Committee Meeting held Tuesday 14 March 2023

Attachment 1. Minutes of the Planning and Consultation Committee Meeting held Tuesday 14 March 2023

Planning and Consultation Committee Minutes

14 March 2023

6. Consultation Matters

PCC.003/23 Endorsement of Motions for the Municipal Association of Victoria State Council Meeting - 19 May 2023

-
- c) *That the MAV advocate to the State Government to undertake a review of the Maternal and Child Health Program Model and Funding with the intention to improve key quality components of the program including:*
- i. Key Ages and Stages model to address increased scope*
 - ii. Workforce attraction and retention to address workforce shortages*
 - iii. Database functionality*
 - iv. Program and capital funding provided by the State.*
2. Resolves to lodge the motions and rationale (**Attachment 1**) to the Municipal Association of Victoria's State Council Meeting to be held on 19 May 2023 prior to the deadline of 20 March 2023.

CARRIED UNANIMOUSLY

COM.001/23 Confirmation of Minutes Planning and Consultation Committee Meeting held Tuesday 14 March 2023

Attachment 1. Minutes of the Planning and Consultation Committee Meeting held Tuesday 14 March 2023

Planning and Consultation Committee Meeting Minutes

14 March 2023

7. Supplementary and urgent business

Nil

8. Confidential reports

Nil

9. Close of Meeting

The meeting closed at 7:10pm.

Confirmed:

Cr Frances Eyre, Chairperson Consultation Matters

Planning and Consultation Committee Meeting Minutes **14 March 2023**

THIS PAGE WAS LEFT INTENTIONALLY BLANK

Nillumbik Shire Council – Public submissions to the Draft Budget 2023-2024	
Submitter and Key Points	Officer Response
<p>1. [REDACTED]</p> <p>Delighted to see the Hurstbridge netball courts are part of the budget plan. Are there any plans for these to be covered?</p>	<p>Currently, there are no plans to have a cover installed over the new courts.</p>
<p>2. [REDACTED]</p> <p>Fire prevention</p> <p>Fire maintenance/Roadside clearing</p> <p>Do more to protect the community from fire !!!!! - by allowing rural property owners the capacity to clear land- this in turn protects your urban areas</p> <p>The way you have allowed fuel to build up on sides of roads is disgusting & a fire just waiting to happen!</p> <p>Nillumbik needs to be divided as this Council have proved time & time again they are completely out of touch with rural property owners. It is the rural properties that protect your urban areas!!!</p>	<p>Council has an annual program of proactive fire mitigation works across the Shire.</p> <p>This program is generated and endorsed by Council's Municipal Fire Management Planning Committee, which includes representatives from our partner agencies from Forest Fire Management Victoria, Fire Rescue Victoria, CFA, Parks Vic and Melbourne Water.</p>
<p>3. [REDACTED]</p> <p>Where is the budget for bushfire mitigation? Where is the budget for dirt road sealing to mitigate dust pollution? Where is the budget for weeds on council land and roadside? Where is the budget for sealing rural roads so the visitor cyclists have a safer environment than the narrow main roads? Where is the budget for dealing with the deer population? Which roads are in the \$1.4m road allocation for this year and what are you doing to the roads?</p>	<p>Council has an annual program of proactive fire mitigation works across the Shire.</p> <p>This program is generated and endorsed by Council's Municipal Fire Management Planning Committee, which includes representatives from our partner agencies from Forest Fire Management Victoria, Fire Rescue Victoria, CFA, Parks Vic and Melbourne Water.</p> <p>Council does not currently have a dust suppressant program, however Council is at the initial stages of considering potential dust suppressant options.</p> <p>There is an annual sealing program included in the budget. These can include a variety of works related to the upgrading of the standard of a road, however will predominantly be directed towards the sealing of (currently) unsealed roads.</p> <p>Consideration of whether Council's annual roadside weed management program, including budgets and resources required to help meet Council's obligations as a land manager under the Catchment and Land Protection Act 1994, requires review. This falls within the scope of the review of Council's Biodiversity Strategy, which is a current Council Plan action.</p> <p>Council is currently reviewing and updating its Biodiversity Strategy. This process will identify strategic priorities for Council's investment and advocacy over the coming years to help manage invasive species and enhance the biodiversity of the Nillumbik.</p> <p>Council's deer control program is funded by the Victorian Government. In the 2020/2021 State Budget, the Victorian Government allocated \$18.25 million over four years and \$4.4 million ongoing to support the on-ground delivery of the Victorian Deer Control Program.</p> <p>Two sections of roads have been proposed to be upgraded: Clarke Avenue in Wattle Glen, and (potentially) Haldane Road, in Eltham. There is another road-related program (Road and Carpark Renewal, \$1.74 million).</p>

<p>4. [REDACTED]</p> <p>You've just spent millions on the netball court in diamond creek and now plan on spending more!!</p> <p>Where's the fire mitigation, where's the road improvements? What about the deer cull?</p> <p>How about keeping the outdoor pool open throughout the year?</p> <p>You are the worst council in Victoria, and it's well acknowledged. What are my rates going too? Only the wealthy in diamond creek and Eltham? Not sure if your aware of the size of the shire and that it goes past the wattle tree Rd roundabout</p>	<p>Council has an annual program of proactive fire mitigation works across the Shire.</p> <p>This program is generated and endorsed by Council's Municipal Fire Management Planning Committee, which includes representatives from our partner agencies from Forest Fire Management Victoria, Fire Rescue Victoria, CFA, Parks Vic and Melbourne Water.</p> <p>There is an annual sealing program included in the budget. These can include a variety of works related to the upgrading of the standard of a road, however will predominantly be directed towards the sealing of (currently) unsealed roads.</p> <p>Council's deer control program is funded by the Victorian Government. In the 2020/2021 State Budget, the Victorian Government allocated \$18.25 million over four years and \$4.4 million ongoing to support the on-ground delivery of the Victorian Deer Control Program.</p> <p>The pool is open from 1 November to 31 March, however these dates can be extended depending on the weather.</p>
<p>5. [REDACTED]</p> <p>My suggestion would be: don't increase the rates and forego some of the discretionary spend for the year.</p> <p>Acknowledging the cost of living crisis, and then increasing the rates to the full amount permissible under law is at best reckless, and at its worst completely heartless.</p> <p>Families are tightening the belt - so should local government.</p> <p>How can the council justify any increase when Nillumbik council rates are already among the highest in Australia?</p>	<p>Submission noted. Council levies rates and charges under the Local Government Act 1989 in order to fund, deliver, and maintain essential community infrastructure and services. The increase to rates is in compliance with the rate-capping framework established by the Victorian State Government and is reflective of the continued provision of services, which have been maintained at existing levels, and capital works program delivery.</p>
<p>6. [REDACTED]</p> <p>I found it difficult to find what specifically the budget would be spend on in the 70-page document. I would like to see more budget spent on sustainability, environmental issues, waste reduction/waste education (e.g. more composting, fines for inappropriate use of bins), genuine information about what is actually being recycled and more investment in this.</p> <p>I would like to see a reduction in expenditure on sports facilities as this should be of lower priority than preserving our planet and our climate. I would also like to see more investment in green energy, subsidising electric vehicles, electric charging stations and solar lighting. Preserving Eltham as a green wedge and reducing the number of subdivisions and removal of tree canopy should feature in the budget, in terms of more investment in greening and preserving Eltham's character and increasing rates/taxes on investors who want to subdivide and build multiple/multi storey dwellings on large blocks.</p>	<p>Submission noted. Council is currently developing a Towards Zero strategy. Once completed this document will inform actions for the following financial years in terms of reducing our carbon footprint.</p> <p>Council is aware and actively working on mitigation of multiple climate change threats facing the Nillumbik community. Council has declared a Climate Emergency and proactively integrates climate change mitigation and adaptation into all Council actions as guided by the adopted Climate Action Plan 2022-2032.</p> <p>Council is committed to enhancing biodiversity, encouraging sustainable built form, reducing our environmental impact and continuing education around environmental sustainability. Council has a number of related environmental sustainability action plans that identify how to put the above commitment into action. With specific reference to tree canopy, biodiversity projects and programs aimed at protecting and improving components of the natural environment, to counteract the pressure of incremental loss of vegetation has proven beneficial. With the introduction of the Nillumbik Over-the- Counter Native Vegetation Offset Program some of these losses have and continue to be offset within the Shire.</p> <p>Further and specifically with respect to planning in Nillumbik for the arrest of urban tree canopy loss, Council is constantly seeking to reinforce planning scheme provisions to protect the Green Wedge and appropriately manage development of the Shire's urban areas. Council is currently developing its Neighbourhood Character Strategy and Housing Strategy and has an adopted Green Wedge Management Plan. These documents will guide appropriate land use and development in the Shire to ensure the valued elements of the Shire are protected and reinforced. These strategies will inform and justify future amendments to the Nillumbik Planning Scheme and work collaboratively with aforementioned biodiversity, climate action and sustainability actions to reinforce the actions council is currently delivering.</p>
<p>7. [REDACTED]</p> <p>For a suburb like Eltham. The council rate already Significantly higher than the surrounding. Ex. . Doncaster. This on the way reduce the value of property. A lot of people already said enough in details ab the changes and why the wages increase should come to affect ours rate. 4K/ 1 year vs other council 2.5K for property more expensive than ours. It just not fair.</p>	<p>Submission noted. Council levies rates and charges under the Local Government Act 1989 and 2020 in order to fund, deliver, and maintain essential community infrastructure and services. The increase to rates is in compliance with the rate-capping framework established by the Victorian State Government and is reflective of the continued provision of services, which have been maintained at existing levels, and capital works program delivery.</p>

<p>8. [REDACTED]</p> <p>Please reconsider your rate and rubbish increase. Our property values have decreased although the rate evaluation doesn't reflect this. With interest rate rises and cost of living we need our council to support its own for 12 months. Your decision could push people out of the community and cause major financial stress.</p>	<p>Submission noted. Council levies rates and charges under the Local Government Act 1989 and 2020 in order to fund, deliver, and maintain essential community infrastructure and services. The increase to rates is in compliance with the rate-capping framework established by the Victorian State Government and is reflective of the continued provision of services, which have been maintained at existing levels, and capital works program delivery.</p> <p>The waste service charge captures all costs associated with the provision of the service, including the cost of rehabilitation of the former landfill sites. The service charge is compliant with statutory regulations.</p>
<p>9. [REDACTED]</p> <p>I really believe a rate rise this year is beyond the means of most. Our rates skyrocketed last year because of 'valuation'. Unless that valuation is dropping again in line with house prices dropping, then you can't possibly throw another rate increase on residents at this point in time!</p>	<p>Submission noted. Council levies rates and charges under the Local Government Act 1989 and 2020 in order to fund, deliver, and maintain essential community infrastructure and services. The increase to rates is in compliance with the rate-capping framework established by the Victorian State Government and is reflective of the continued provision of services, which have been maintained at existing levels, and capital works program delivery.</p>
<p>10. [REDACTED]</p> <p>Rates went up over \$500 this year It is totally unacceptable to again raise the rates in the current economic environment Council members need to get out and see how hard people are struggling and also remember that councils are voted in and can easily and certainly will be voted out next election With more roadworks and pot holes there is no evidence of money being efficiently utilised</p>	<p>Submission noted. Council levies rates and charges under the Local Government Act 1989 and 2020 in order to fund, deliver, and maintain essential community infrastructure and services. The increase to rates is in compliance with the rate-capping framework established by the Victorian State Government and is reflective of the continued provision of services, which have been maintained at existing levels, and capital works program delivery.</p>
<p>11. [REDACTED]</p> <p>My rates just went up 20%, my family can't afford another 3.5% to cover a roof for netball courts in diamond creek. Please reconsider as the pain this is going to inflict on my family amongst many other in Nillumbik might be catastrophic.</p>	<p>Submission noted. Council levies rates and charges under the Local Government Act 1989 and 2020 in order to fund, deliver, and maintain essential community infrastructure and services. The increase to rates is in compliance with the rate-capping framework established by the Victorian State Government and is reflective of the continued provision of services, which have been maintained at existing levels, and capital works program delivery.</p>
<p>12. [REDACTED]</p> <p>I would love to speak with someone about the car park upgrade, assuming it is the coles/IGA car parks. As a local resident, a mother and a driving instructor I have redesigned this area on paper to create a safer and more efficient flow for traffic and pedestrians. I would absolutely love to provide some ideas and suggestions to whoever is taking the lead on this project.</p>	<p>Carparks associated to retail area such as IGA and Coles are frequently under the responsibility of the body corporate that manages all those common areas are within private property.</p>

<p>13. [REDACTED]</p> <p>As a ratepayer, we have the highest rates in the state. I am disappointed that council is prioritising all sorts of causes and yet not enough money is being allocated to the most important duties of any council. Not enough is going to road improvement. Not enough is going to slashing, weed control andost importantly, not enough is going to the legal requirements for bushfire mitigation. Us rural residents are seeing very little for our rates, and are being left with less upgraded roads and cleared roadsides. These should be your first priority.</p>	<p>Submission noted. Council levies rates and charges under the Local Government Act 1989 and 2020 in order to fund, deliver, and maintain essential community infrastructure and services. The increase to rates is in compliance with the rate-capping framework established by the Victorian State Government and is reflective of the continued provision of services, which have been maintained at existing levels, and capital works program delivery.</p> <p>There is an annual sealing program included in the budget. These can include a variety of works related to the upgrading of the standard of a road, however will predominantly be directed towards the sealing of (currently) unsealed roads. Council does not currently have a dust suppressant program, however Council is at the initial stages of considering potential dust suppressant options.</p> <p>Consideration of whether Council's annual roadside weed management program, including budgets and resources required to help meet Council's obligations as a land manager under the Catchment and Land Protection Act 1994, requires review. This falls within the scope of the review of Council's Biodiversity Strategy, which is a current Council Plan action.</p> <p>Council is currently reviewing and updating its Biodiversity Strategy. This process will identify strategic priorities for Council's investment and advocacy over the coming years to help manage invasive species and enhance the biodiversity of the Nillumbik.</p> <p>Council has an annual program of proactive fire mitigation works across the Shire.</p> <p>This program is generated and endorsed by Council's Municipal Fire Management Planning Committee, which includes representatives from our partner agencies from Forest Fire Management Victoria, Fire Rescue Victoria, CFA, Parks Vic and Melbourne Water.</p>
<p>14. [REDACTED]</p> <p>I am very concerned by Nillumbik 's lack of a tree canopy strategy. Trees are our future. We should be a leader in this important area. The Council needs to be involved in free and subsidised tree days..community planting days...stricter rules on tree removal when redeveloping blocks. Let Nillumbik Council be a shining example of how the green wedge can protect our and our children's future.</p>	<p>Council recognise and support the importance of trees in Nillumbik. We are in the early stages of investigating measures to enhance the urban tree canopy as per a current Council Plan priority action. The achievement of positive canopy outcomes can and should be influenced by a number of mechanisms that work collaboratively to achieve a net benefit with regard to tree canopy. Council are currently investigating what are the most practicable tools to use to support our urban tree canopy and what is required to make sure we have robust approach. Investigations include:</p> <ul style="list-style-type: none"> • The investigation has already included consideration of how local laws might be used to strengthen tree protections. Our new General Local Law 1 was endorsed on 13 December 2022 and it includes clause 52 that provides new protection for urban amenity trees (substantial trees) on private land that is not covered by a BFA or BMO under the planning scheme. Substantial trees are defined as having a trunk circumference of 50cm or greater. • Opportunities to specify size of canopy tree's on private land and permeability, setbacks and other matters necessary to ensure canopy trees on private land can thrive is being considered through the Neighbourhood Character Strategy development process. This would form the basis of a future amendment to the Nillumbik Planning Scheme to insert specific controls with regard to canopy trees in residential areas. • Management Plans are in place for Council's conservation bush reserves. • Council's Tree Policy and Guidelines provide a guide action and investment to protect and enhance trees on Council land –including street trees and park/open space trees. • \$40,000 was allocated in the 2022-2023 Council budget to inform an Urban Forest Strategy.
<p>15. [REDACTED]</p> <p>Would you please consider building bus shelters on the main bus run that circumnavigates Eltham. It is cruel seeing disabled and elderly residents sitting in the grass in the pouring rain.</p>	<p>Bus shelters are the responsibility of the Department of Transport and Planning, as they are intrinsic part of the bus services they provide.</p>

<p>16. [REDACTED]</p> <p>I disagree with the proposal of a 3.5% rate rise and 5.78% waste charge increase in Nillumbik.</p> <p>This is going to hit cost of living right when families are feeling it. Rates collected is going to increase by \$3million since last budget. Council Employee Costs will jump by \$3.7million since last budget with permanent staff up by 9 bringing the total to 330.</p> <p>Spending on Roads will be reduced by \$5.5million in this budget and 'Recreation, leisure and community facilities' reduced by \$6.5million in this budget so that's not where the money is going. Anyone shoe drives around here or who has children in sports (or who enjoys them personally) won't see proportionate improvements. Ie: Spending on internal council staff is up but on roads and facilities is down.</p> <p>This needs rethinking. We need tangible improvements not more staff. Our rates are already the second highest in the entire Melbourne CBD yet look at the state of our area.</p>	<p>Submission noted. Council levies rates and charges under the Local Government Act 1989 and 2020 in order to fund, deliver, and maintain essential community infrastructure and services. The increase to rates is in compliance with the rate-capping framework established by the Victorian State Government and is reflective of the continued provision of services, which have been maintained at existing levels, and capital works program delivery.</p> <p>The waste service charge captures all costs associated with the provision of the service, including the cost of rehabilitation of the former landfill sites. The service charge is compliant with statutory regulations.</p> <p>The reduction in Roads and Recreation, leisure and community facilities is attributable to one off grants received by Council. In comparison to the 2022/2023 Adopted budget, funding for roads has increased by \$1.7 million and for Recreation, leisure and community facilities has increased by \$1.5 million.</p>
<p>17. [REDACTED]</p> <p>Does doing up the road on Silvan Road and any other gravel roads fall within the budget?</p> <p>Getting mighty sick and tired of the constant potholes and flattening of the gravels - it's a hazard for all road users and it's an accident waiting to happen.</p>	<p>Council has several programs related to road: road renewal, road upgrade, road safety and carpark renewal. Currently the process to seal the gravel section of Silvan Road is through a Special Charge Scheme.</p> <p>Gravel roads are inspected and graded on a regular basis as per our Road Management Plan. Should you see a pothole please report it to Council for a crew can inspect and make the necessary repairs.</p>
<p>18. [REDACTED]</p> <p>Please raise the zebra crossing in hurstbridge near the train station and add another from Allwood house to the playground.</p> <p>Decrease speed limit in these areas to 40 km/hr instead of 50/hr.</p>	<p>Zebra crossings on arterial roads (as in the case of Main Road) are the responsibility of the Department of Transport and Planning (DTP). Even for local roads (for which council is the responsible road authority) zebra crossings are considered major traffic control devices, and these require DTP's approval. The request for a zebra crossing to be approved by DTP needs to meet certain criteria in terms of numbers of pedestrian crossing the road during any hour time, vehicular traffic and proximity to roundabouts and other zebra crossings.</p> <p>Speed reduction in local roads are also assessed by DTP. We will investigate if there are merits in the reduction of the current speed limit.</p>
<p>19. [REDACTED]</p> <p>I believe more needs to be spent on road upgrades and improving dirt roads. Eagles Nest road is a prime example, dangerous corners, maintenance isn't adequate, washed out multiple times as the drains weren't maintained. I believe money needs to be spent to seal this road.</p>	<p>All unsealed roads receive an annual grade. There are a number of unsealed roads that have shown signs that an additional grade is required per annum. Officers will investigate Eagles Nest Road and consider it for an additional grade per annum. Council will also trial use of a different class of crushed rock on these roads in an effort to address the impact on this issue. Drainage works will be investigated to address the drainage issue in the area and works will be programmed once these investigations are completed.</p>
<p>20. [REDACTED]</p> <p>I would really like to see some money allocated to keeping the outdoor pool at diamond creek open. A cover would make a huge difference to heating cost and an increase in a casual swim would help to cover staff cost. It's an essential community facility for health and well-being and many elderly use it to help with mobility. It needs to be better utilised by encouraging community groups to attend. Even if it was open for the morning in the autumn and spring to start and perhaps just close for winter. It's crazy to close at the end of March when the weather is still so mild. The nearest outdoor pool is templestowe a long way from hurstbridge. I'm hoping you consider my request Thankyou Elana Johnstone</p>	<p>There is a commitment for a \$1.5 million grant from the Federal Government, which will assist in upgrading this much loved community asset.</p> <p>The pool is open from 1 November to 31 March, annually however these dates can be extended depending on the weather.</p>
<p>21. [REDACTED]</p> <p>I don't see anywhere where roads in hurstbridge are being looked after properly. Laceys Road is dirt and should be graded at least twice per year. This only happens if there is a complaint. Additionally the Co Op school entrance is extremely dangerous. Parents can't see incoming traffic or accommodate oncoming cars from residents in Laceys rd. There have been numerous occasions of near misses of head on collisions as a result of poor vision. The entrance from the main road to the co op school needs to be changed to be safe for everyone.</p>	<p>Local unsealed roads are graded on a regular basis as per our Road Management Plan.</p> <p>Council will investigate this matter over the next few weeks to ascertain if there is anything that is required to make this intersection safer, and will liaise with the school. If works are required, they will be prioritised accordingly.</p>

<p>22. [REDACTED]</p> <p>Last year approximately \$2.0 mill was spent on the kangaroo landfill site . The forecast is to spend another \$5.0 mill. I understand that there is a need to rehabilitate the area but exactly what works need to be undertaken . Is the site contaminated? Is this the same site where the proposed solar farm was to be built . Why do we need to do 10 year forecasts they are generally meaningless, five years would be more than enough. Thank you</p>	<p>As directed by the Environment Protection Authority Victoria (EPA), Council was required to rehabilitate two closed landfills to bring them into line with current EPA standards. This was the Plenty Landfill, which has been completed, and the Kangaroo Ground Landfill.</p> <p>The Kangaroo Ground Landfill, once a quarry, was used as a municipal landfill before closing and being capped with an imported mass soil cap covering the site.</p> <p>Whilst compliant at the time of closure, this method is no longer acceptable and the site now is being fully rehabilitated with a synthetic liner across the site to prevent water permeating into the waste, additional cover soils over that liner, along with gas collection and sub-surface drainage networks.</p> <p>This will ensure the landfill is compliant with current EPA standards and help provide protection for any future site users and the surrounding environment.</p> <p>The site, as a closed landfill, would be considered contaminated below the cap. The rehabilitation works are necessary to ensure this contamination is safely contained within the landfill site.</p> <p>The cost of such a rehabilitation is significant. Construction alone will be in excess of \$16 million. There is also a significant cost involved with auditing, monitoring and other functions to ensure the works are completed to the EPA's requirements. The remaining works are being distributed across the next three financial years to help Council accommodate the cost whilst still meeting EPA required timeframes.</p>
<p>23. [REDACTED]</p> <p>Nillumbik Draft Budget 2023-24 Urban Forest Strategy (refer to attachment 1.1)</p>	<p>Council recognise and support the importance of trees in Nillumbik. We are in the early stages of investigating measures to enhance the urban tree canopy as per a current Council Plan priority action. The achievement of positive canopy outcomes can and should be influenced by a number of mechanisms that work collaboratively to achieve a net benefit with regard to tree canopy. Council are currently investigating what are the most practicable tools to use to support our urban tree canopy and what is required to make sure we have robust approach.</p>
<p>24. [REDACTED]</p> <p>NCAT submission on Budget 2023-2024 (refer to attachment 1.2)</p>	<p>Council recognise and support the importance of trees in Nillumbik. We are in the early stages of investigating measures to enhance the urban tree canopy as per a current Council Plan priority action. The achievement of positive canopy outcomes can and should be influenced by a number of mechanisms that work collaboratively to achieve a net benefit with regard to tree canopy. Council are currently investigating what are the most practicable tools to use to support our urban tree canopy and what is required to make sure we have robust approach.</p> <p>With respect to the request for funds to be allocated in the upcoming budget for the appointment of an urban forester who is conversant with the complexities of ecosystems in an urban environment, and has the specialised ecological and planning knowledge to advocate to the state government, Council is currently undertaking a review of services and resources to enable appropriate resourcing to be allocated to further the objective of advocacy and specialist knowledge and experience within the organisation to manage, protect and enhance the treed environment of Nillumbik.</p>
<p>25. [REDACTED]</p> <p>Allocation of funds for road maintenance, particularly in Arthurs Creek is required. Deep Creek Road and Running Creek Road are a disgrace.</p>	<p>All unsealed roads receive an annual grade. There are a number of unsealed roads that have shown signs that an additional grade is required per annum. Deep Creek Road and Running Creek Road fit into this category and will be programmed for an additional grade per annum. Council will also trial use of a different class of crushed rock on these roads in an effort to address the impact on this issue. Drainage works are also currently being investigated to address the drainage issue in the area and works will be programmed once these investigations are completed.</p>

<p>26. [REDACTED]</p> <p>All dirt roads are left in a terrible state , yet us families that live on these roads will still have a rate increase, for what exactly? Until these roads are sealed or maintained to a higher level instead of the slap dash quick fill ins that deteriorate the very next day, our rates should not be increased. 425 Eagles Nest Road.</p>	<p>All unsealed roads receive an annual grade. There are a number of unsealed roads that have shown signs that an additional grade is required per annum. Officers will investigate Eagles Nest Road and consider it for an additional grade per annum. Council will also trial use of a different class of crushed rock on these roads in an effort to address the impact on this issue. Drainage works will be investigated to address the drainage issue in the area and works will be programmed once these investigations are completed.</p>
<p>27. [REDACTED]</p> <p>We urgently need Deep Creek Road and Running Creek Roads Arthur's Creek sealed or at least graded as they are very dangerous to the point of a possible fatality. Access for emergency vehicles is almost impossible. Our road has very heavy traffic, more so than other sealed roads in the shire. We require your urgent attention.</p>	<p>Council has approximately 300 km of unsealed roads. These roads are currently being prioritised to determine which sections of road need to be sealed. The main factors considered in this prioritisation process are safety, vehicular volumes and maintenance costs. All unsealed roads receive an annual grade. There are a number of unsealed roads that have shown signs that an additional grade is required per annum. Deep Creek Road and Running Creek Road fit into this category and will be programmed for an additional grade per annum. Council will also trial the use of a different class of crushed rock on these roads in an effort to address the issue. Drainage works are also being investigated to address the drainage issue in the area and works will be programmed once these investigations are completed.</p>
<p>28. [REDACTED]</p> <p>Hi,</p> <p>I am a Nillumbik resident living in Arthurs Creek, where my husband and I have lived for almost 18 months. Over the past 6-12 months, we have noted a material deterioration in the quality of the gravel roads along Deep Creek Rd and Running Creek Road.</p> <p>The corrugation is so severe that it is now unsafe for all vehicles to drive on, and completely unusable unless you are travelling in a 4WD.</p> <p>Being part of the Arthurs Creek Community Facebook page it is clear this is a major issue for all residents who live off these roads. Multiple residents have reported this issue to the Council and lodged complaints over the past 4 weeks - and yet nothing is done to repair the roads. I can only assume the chronic inaction is due to a lack of funding.</p> <p>Given this, I implore the Council to increase the funding available in the 2023-24 budget to adequately maintain the gravel roads in Arthurs Creek (particularly Running Creek Rd and Deep Creek Rd).</p> <p>I fear that somebody will be seriously injured if action is not taken and additional funds allocated to provide safe roads for residents.</p>	<p>Council has approximately 300 km of unsealed roads. These roads are currently being prioritised to determine which sections of road need to be sealed. The main factors considered in this prioritisation process are safety, vehicular volumes and maintenance costs. All unsealed roads receive an annual grade. There are a number of unsealed roads that have shown signs that an additional grade is required per annum. Deep Creek Road and Running Creek Road fit into this category and will be programmed for an additional grade per annum. Council will also trial the use of a different class of crushed rock on these roads in an effort to address the issue. Drainage works are also being investigated to address the drainage issue in the area and works will be programmed once these investigations are completed.</p>
<p>29. [REDACTED]</p> <p>The roads in and around Arthur's Creek are appalling.... My children are nearly run over at times walking to bus stop and back. The roads are corrugated and cars fly over the hills due to the road conditions. The crests especially on Brennan's rd east need to be sealed before a fatality occurs. I have mentioned this on numerous occasions to the shire.</p>	<p>Council has approximately 300 km of unsealed roads. These roads are currently being prioritised to determine which sections of road need to be sealed. The main factors considered in this prioritisation process are safety, vehicular volumes and maintenance costs. All unsealed roads receive an annual grade. There are a number of unsealed roads that have shown signs that an additional grade is required per annum. Deep Creek Road and Running Creek Road fit into this category and will be programmed for an additional grade per annum. Council will also trial the use of a different class of crushed rock on these roads in an effort to address the issue. Drainage works are also being investigated to address the drainage issue in the area and works will be programmed once these investigations are completed.</p> <p>Council officers will conduct a road safety audit on Brennan's Road to determine best course of action.</p>
<p>30. [REDACTED]</p> <p>It is disappointing to see that the draft Budget 2023-2024 does not include any funding for the repair of either grounds at Eltham Lower Park. The Eltham Lacrosse Club is faced with the likelihood of another season of ground closures due to poor drainage and ground surfaces. This inability to access suitable grounds is impacting participation as the club grapples with trying to manage training and games on poorly maintained grounds, as well as having a financial impact due to inability to host games. Can you please advise why works were not included in the 2023-2024 budget, and when works will be scheduled through your capital program?</p>	<p>The cost of a full repair of a single oval currently exceeds \$1.5 million. As this amount is significant, Council is required to provide a balanced capital works budget for renewal and upgrade works across the different assets (roads, drains, footpaths, buildings, sports grounds, open space, etc). With this in mind, council is currently looking for funding options to address the issues with a proposal put forward in the next budget for 2024/2025 year. Due to the cost, this project is likely to require budgeting across multiple financial years.</p>

<p>31. [REDACTED]</p> <p>Mitigation of Risks and Hazards presented by Crowther Ave, Wattle Glen (refer to attachment 1.3)</p>	<p>Council officers will conduct an assessment of Crowther Avenue in line with Council's current Road Management Plan, to determine the best course of action in addressing your concerns.</p> <p>All unsealed roads receive an annual grade. There are a number of unsealed roads that have shown signs that an additional grade is required per annum. Council will also trial use of a different class of crushed rock on these roads in an effort to address the impact on this issue. Additionally, this road will be assessed and a priority will be allocated within the road upgrade program for its sealing in future financial years.</p>
<p>32. [REDACTED]</p> <p>Allwood House funding submission 2023 (refer to attachment 1.4)</p>	<p>Council currently provides funding to Allwood House through the provision of the facilities in which Allwood operate from as well as maintenance and upgrades of these facilities.</p> <p>Council also provide in kind support through officer time from the Community Development, Place Activation and Living & Learning Nillumbik teams.</p> <p>Council does not have budget availability to provide recurrent funding to Allwood House.</p> <p>Council would welcome a grant submission for NCF grant to support programs being delivered by Allwood house .</p>
<p>33. [REDACTED]</p> <p>CopperLine Community Newspaper – submission for funding (refer to attachment 1.5)</p>	<p>Council are unable to make a commitment to contribute through ongoing funding, it engages with paid advertising in this and other local newspapers according to our business needs. Council would also not wish to compromise the perception of journalistic independence of this publication by providing direct funding.</p>
<p>34. [REDACTED]</p> <p>Eltham Community Action Group (ECAG) (refer to attachment 1.6)</p>	<p>Council recognise and support the importance of trees in Nillumbik. We are in the early stages of investigating measures to enhance the urban tree canopy as per a current Council Plan priority action. The achievement of positive canopy outcomes can and should be influenced by a number of mechanisms that work collaboratively to achieve a net benefit with regard to tree canopy. Council is undertaking research to inform Council's current and future state tree canopy cover scenarios to better inform the most appropriate tools to achieve future tree canopy cover. Further, Council are currently investigating what are the most practicable tools to use to support our urban tree canopy and what is required to make sure we have robust approach.</p>
<p>35. [REDACTED]</p> <p>Replacement Technical Rescue Vehicle (refer to attachment 1.7)</p>	<p>There has been a long-standing commitment from Council to support SES to fund operational and maintenance of SES volunteer units. This commitment will continue.</p>

<div>36. <div></div></div> <div><p>It is disappointing to note again that Council has not allocated any budget for any upgrades or improvements to Eltham Lower Park.</p><p>While it is quite a good sports field over summer as used by Lower Eltham Cricket Club, over winter the grounds are occupied by Eltham Lacrosse Club. The north oval in particular becomes unplayable very early in the season with wet weather rendering the ground unsafe and unusable by June. This occurs to the extent that maintenance crews are unable to even mow the grass. This sadly makes the recent installation of high quality lighting on the north oval redundant, with the field being unusable during the season which requires the lighting! Over summer during the daylight savings period there is no need for artificial lighting, and the field is usually in excellent condition.</p><p>This restricts Eltham Lacrosse Club's ability to host training and competition events, with only one playing field available for use. In particular, with recent changes to the administration of lacrosse competition to improve accessibility and inclusion, both men's and women's competition are now to take place on Saturdays. Without two fields the Club cannot host simultaneous games that supports this objective. This also has the effect of overusing the "south" oval, which rapidly declines in quality as the winter season progresses.</p><p>With the larger north oval unavailable for training or competition due to the significant degradation, the usage load on the south oval is more than doubled. Further increasing this damage is the extensive use of the south oval as an off-lead dog park. Significant damage to the pitch results from this overuse by dogs on a wet ground that becomes increasingly muddy as winter progresses.</p><p>It is time for this ground to be refurbished as an all seasons playing field, which also makes the investment in the quality lighting worthwhile. It is also time for the off-lead dog park to be relocated off the south playing field.</p></div>	<div>The cost of a full repair of a single oval currently exceeds \$1.5 million. As this amount is significant, Council is required to provide a balanced capital works budget for renewal and upgrade works across the different assets (roads, drains, footpaths, buildings, sports grounds, open space, etc). With this in mind, council is currently looking for funding options to address the issues with a proposal put forward in the next budget for 2024/2025 year. Due to the cost, this project is likely to require budgeting across multiple financial years.</div>
<div>37. <div></div></div> <div><p>We object to the proposed 3.5% rate increase and the proposed increase in waste charge.</p><p>The people of Nillumbik are faced with huge mortgage rate increases and cost of living increases. To increase council rates at this time is not justified. Our shire is largely made up of families and many pensioners who can ill afford such a large increase.</p><p>Pensioners should receive a greater discount on their rates.</p><p>It is hard to justify such exorbitant rates in a 'Metropolitan' no growth shire.</p><p>The allocation of expenditure seems to favour staff increases at the expense of bushfire mitigation, road maintenance and community facilities.</p><p>Council spends millions of ratepayer dollars on a recreation trail and Edendale farm which is for the benefit of greater Melbourne requiring large sums for maintenance and running costs.</p><p>It time to cut costs and serve the local area.</p></div>	<div><p>Submission noted. Council levies rates and charges under the Local Government Act 1989 and 2020 in order to fund, deliver, and maintain essential community infrastructure and services. The increase to rates is in compliance with the rate-capping framework established by the Victorian State Government and is reflective of the continued provision of services, which have been maintained at existing levels, and capital works program delivery.</p><p>The pension rebate available to eligible pensioners is determined by the Department of Families, Fairness and Housing. Council is regularly audited to ensure the rebates are being applied correctly.</p></div>

<p>38. [REDACTED], President, Green Wedge Protection Group Inc (refer to attachment 1.8)</p>	<p>Consideration of whether Council’s annual roadside weed management program, including budgets and resources required to help meet Council’s obligations as a land manager under the Catchment and Land Protection Act 1994, requires review. This falls within the scope of the review of Council’s Biodiversity Strategy, which is a current Council Plan action.</p> <p>Council is currently reviewing and updating its Biodiversity Strategy. This process will identify strategic priorities for Council’s investment and advocacy over the coming years to help manage invasive species and enhance the biodiversity of the Nillumbik.</p> <p>Council’s Assistant Fire Prevention Officers inspect and issue Fire Prevention Notices to private property and vacant land within the Bushfire Management Overlay, in addition to any other property that constitutes a fire risk. A Fire Prevention Notice is then issued. This notice requires property owners/occupiers to maintain the property in line with the direction stated on the “notice”, including removal of noxious weeds.</p> <p>Outside of the Fire Danger Period, there are local law provisions that enable Council Authorised Officers to issue Notices To Comply if a property is deemed to be unsightly upon inspection.</p> <p>Council recently adopted the Nillumbik General Local Law 1 which came into effect on 22 December 2022 and is available on our website.</p>
<p>39. Diamond Valley Basketball Association Indoor Facilities Strategy Budget Request (refer to attachment 1.9)</p>	<p>The Recreation and Leisure team are aware of the request for an Indoor Facilities Strategy to be developed. This work will be scheduled as part of future operating budget.</p>
<p>40. [REDACTED], Hohnes Road Playhouse Funding for Hohnes Road Playhouse (refer to attachment 1.10)</p>	<p>Across Nillumbik Shire there are a range of community based (not-for-profit) early years services operated by volunteer committees of management, including 16 preschools and five child care services. There are also many community playgroups (including Hohnes Road Playhouse), most of which operate out of facilities owned by other organisations or groups, and which are led by community groups. Council does not provide annual funding to any of these services or programs.</p> <p>Council provides support to community operated early years programs through the provision of infrastructure, advice and information to volunteer operators and once-off community grants. \</p> <p>In 2017, Council worked with Hohnes Road committee for several months to look for alternative ways to continue operating the service based on the program type that was in demand from the community and without being subsidised by Nillumbik ratepayers. This was achieved and a sustainable model was implemented.</p> <p>Council is funded by the State Government, and co-funds the delivery of Maternal Child Health programs and Supported (Facilitated) Playgroups. These programs are intended to support families through the early years of a child’s life (birth to 3 years) and provide extra support to eligible families who are vulnerable. From 3 years of age, children are eligible to attend 15 hours of free kindergarten at participating kindergartens. From 2023, all of the community based kindergartens and child care services across the Shire are offering free kindergarten for 3 and 4 year old children.</p> <p>If you would like any support to access Council’s community grants or advice on accessing other external grants or funding opportunities, please contact Council’s Grants Officer.</p>
<p>41. [REDACTED] FOAP secretary for [REDACTED] president, Friends of Apollo Parkways Inc Friends of Apollo Parkways Inc (refer to attachment 1.11)</p>	<p>Council is required to provide a balanced capital works budget for renewal and upgrade works across the different assets (roads, drains, footpaths, buildings, sports grounds, open space, etc). With this in mind, Council is currently looking for funding options to address suggested projects such as that which you have proposed, and will consider these works in future budget cycles.</p>

Submission to Nillumbik Draft Budget 2023-24 Community Consultation: closes 30 March 2023

Thank you for the opportunity for me to contribute to the community consultation process for the Nillumbik draft budget.

I am a resident of Eltham, having lived here since 1989 with my family. We have been very happy in Eltham and cherish what living here has to offer. I particularly value our urban tree canopy and vegetation for many reasons, among which are neighbourhood character and the many benefits trees and vegetation have in and amongst our urban living spaces, and feel that our “urban forest” should be protected and enhanced in the face of the many threats it faces, and stands to face in the future.

I advocate for an urban forest strategy to be developed for Nillumbik and for it to be developed as a separate strategy with funds in the Nillumbik budget. I have looked at similar urban forest strategies that have been developed for councils like Whitehorse and Melbourne (Banyule is in the process of drafting theirs), and feel that with our own tree canopy and urban vegetation similarly needing protection and management, one should be developed for Nillumbik. Such a strategy would contribute greatly to maintaining and enhancing neighbourhood character and provide a basis for sound management of our urban forest in the long term.

Urban forestry is generally defined as the art, science and technology of managing trees and forest resources in and around urban community ecosystems for the physiological, sociological, economic, and aesthetic benefits trees provide society.

<https://www.sciencedirect.com/science/article/abs/pii/S1618866705000464>. The urban forest is planned, designed and managed along with the ecosystems (including soil and water) that support them.

The urban forest all over Melbourne is under increasing threats from many sources. Some of these are: impacts from climate change, urban development, in-fill housing, planning which places minor importance on tree and shrub cover, infrastructure development and feral animals, particularly deer and other species, in peri-urban areas. Estimates of tree canopy loss over Melbourne are between one and one and a half percent overall per year. The Centre for Urban Research, RMIT, reported that Nillumbik lost 0.4 percent of its tree cover between 2014 and 2018, as reported in The Age, 29/5/22.

<https://www.theage.com.au/politics/victoria/chainsaws-running-three-times-a-week-melbourne-s-leafy-east-is-losing-its-trees-20220517-p5am1c.html>. Threats to canopy and lower vegetation will increase unless proactive management strategies are employed.

Nillumbik Shire Council - Public submissions to the Draft Budget 2023-2024

An urban forest strategy is a plan to manage an area's urban forest. I feel that Nillumbik Council will need to be proactive in managing urban forest in population centres like Eltham and Diamond Creek in order to preserve and enhance it; otherwise it will diminish under the assault of threats. I understand that currently, funding for urban tree canopy is included under the Council's Biodiversity Strategy. I feel that this structure of funding serves to blur the distinction between the "urban forest" that exists in and among our suburbs, and the biodiversity in the natural environment that exists in the less populated, more intact areas of bushland and rural areas of the shire. The urban forest occupies a unique and quite separate place in our built environment, because it is the close interface of the natural world right where we live. It is our trees, bushes and grasses in the private and public realms in our cities and suburbs - in our gardens, streets, suburban reserves, parks, and alongside our creeks and rivers. Other municipalities are seeing the need to develop urban forest strategies and I feel that Nillumbik similarly needs to proactively manage its urban forest in the face of threats which will only serve to severely undermine it if strategic action is not taken.

I advocate for the council to consider allocating funds in the 2023-24 budget to manage the urban forest of Nillumbik as a separate area of attention from Nillumbik's Biodiversity Strategy. I would like to see an Urban Forest Strategy drawn up that would set out a proactive, long term strategy, with guiding principles, for the urban forest of Nillumbik's suburbs and population centres. A long term vision, guiding principles and well planned strategy would serve to protect and enhance Nillumbik's urban forest in the face of multiple threats that so evidently work to diminish it year by year.





Nillumbik Climate Action Team

Nillumbik Climate Action Team is a community lobby group dedicated to promoting strong action on climate within the Nillumbik community, and at local, state and federal levels of government.

Nillumbik Budget 2023-2024

Thank you for the opportunity to comment on the draft **Nillumbik Budget 2023-2024**. We would like to advocate for the inclusion of an allocation in the upcoming Budget to develop an Urban Forest Strategy. We understand that, at present, funding for an Urban Tree Canopy program is slated to come out of the Council's Biodiversity Strategy, and there is no provision for a separate stand-alone strategy. We consider that the issue of Urban Forest management is too critical to be subsumed under an existing strategy for the reasons outlined below.

Nillumbik Context

Between 2014 and 2018, the Shire of Nillumbik's overall canopy cover decreased by 3%, from 30% to 27%.
<http://services.land.vic.gov.au/SpatialDatamart/dataSearchViewMetadata.html?anzlicid=ANZVI0803008491&extractionProviderId=1> It is estimated that this decrease is continuing at the rate of approximately 1% per year.

The factors contributing to this include vegetation clearing due to bushfire risk mitigation, housing development patterns (larger houses on smaller blocks, and infill in already developed areas), natural loss that is not replaced, bushfires, and reduced natural regeneration of bushland due to a hotter, drier climate, weed invasion, and feral animals such as rabbit and deer.

It is clear that in order to halt this process of attrition, let alone reverse it, a proactive approach to vegetation replacement and enhancement in Nillumbik will be needed in bushland environments *and* in the urban parts of the shire. Dr Greg Moore from the Burnley School for Ecosystem and Forest Science advocates for a minimum canopy cover of 30% in all municipalities across Melbourne <https://lighterfootprints.org/wp-content/uploads/Dr-Greg-Moore-on-Urban-Trees-August-31-2022.pdf>. While we have the privilege to live in a beautiful, leafy part of Melbourne, we cannot continue to take this for granted.

Difference between biodiversity and urban forest

Urban forestry is the 'science and art of managing trees, forests and natural ecosystems *in and around urban communities* to maximise the physiological, sociological, economic and aesthetic benefits *that trees provide society*.' (my italics).

<https://www.melbourne.vic.gov.au/sitecollectiondocuments/urban-forest-strategy.pdf>

The benefits of urban forests are many, and span the environmental, economic, and community domains. Examples of environmental benefits include air and water filtration, cooling due to shade and transpiration, habitat, oxygen, carbon sequestration, reduced soil erosion and nutrient recycling. Community and health benefits include reduced sun exposure, improved community cohesion, sense of place and identity, connection with nature, increased outdoor activity, improved mental and physical well-being and reduction in heat-related illnesses. Economic benefits include energy savings, increased property values, decreased infrastructure damage costs from flooding, decreased health costs and carbon trading benefits.

Thus, urban forests, as distinct from natural environments, involve the interface between ecosystems, people and the built environment, and their function is defined primarily in relation to the benefits they can provide the human population in the context of urban spaces. While there is a lot of overlap between the protection and enhancement of biodiversity in the peri-urban context of Nillumbik, and urban forestry within the urban boundary of Nillumbik, we consider that the differences merit the development of a separate strategy with independent guiding principles, strategies and targets, its own specialised staff and its own budget.

The need for specialised knowledge

Unlike the focus on the indigenous natural environment in the Biodiversity Strategy, the Urban Forest calls for a varied response to vegetation requirements to suit an urban or peri-urban context. In private gardens the requirement to provide optimal shading of a house in summer while allowing sun penetration to rooftop solar panels in winter may dictate the planting of a deciduous tree on the north-west corner of a house. In Nillumbik, the planting of deciduous trees around a house also mitigates bushfire risk.

In higher density urban areas, balcony gardens, rooftop gardens and green walls may be the only options for greenery, and the often harsh conditions of these environments require careful selection of plants, as well as an irrigation system.

The impermeable surfaces of roads, footpaths and carparks that characterise the built environment place extra stresses on urban trees, including restriction of water flow, compression of tree roots and pollution from vehicles and industry.

Heritage factors also come into play in the choice of trees for an urban environment. The example of Main Road's Avenue of Honour comprised of plane trees comes to mind.

In addition, accelerating climate change is presenting challenges such as a hotter climate with more variable and unpredictable rainfall, increasingly severe storm events and catastrophic climatic emergencies such as rain bombs, severe bushfires and extreme flooding events. The selection of trees that are resilient enough to cope with these changing conditions will be paramount to the success of an urban forest. The indigenous plants that currently thrive in Nillumbik and are used for street planting and in revegetation projects around the shire may not be the most appropriate plants for the future.

To manage an urban forest, factors such as Useful Life Expectancy (ULI) of existing trees have to be taken into account to ensure successful succession planting.

There are also planning factors to consider. At present, Council does not have complete control over factors such as maximum site coverage regulations and as-of-right vegetation removal exemptions for bushfire management. These regulations are managed at the State level. For urban areas, planning codes determine the proportion of a lot that can be built on. This proportion is 60% of the total area, but this does not include permeable outdoor paving, driveways, footpaths, outdoor entertaining areas or building eaves when calculating the amount of built site coverage. All of this can mean that there is very little room left over for garden areas suitable for retaining or planting canopy trees. With state planning controls such as the ResCode and Neighbourhood Residential Zone, council advocacy at the state level will be required to effect changes to these laws, and to ensure that the protection and enhancement of canopy trees becomes an integral part of the urban design process.

We consider that the appointment of an urban forester who is conversant with the complexities of ecosystems in an urban environment, and has the specialised ecological and planning knowledge to advocate to the state government, will be essential to the success of an urban forest program, and that funds should be allocated in the upcoming budget for such a position.

The need for different guiding principles, strategies and targets

The guiding principles of an Urban Forest Strategy will differ in some significant ways from those of a biodiversity strategy. While both will strive for the outcome of a resilient, healthy and diverse ecosystem which can mitigate and adapt to climate change, the Urban Forest Strategy's guiding principles will also focus on the need to reduce the urban heat island effect, and to incorporate ecological design into our urban areas for health and wellbeing, liveability and water sensitivity. In contrast to the protection and enhancement of existing indigenous ecosystems, the urban forest is a largely human construct with its focus on the needs of the communities that live in a built environment, and the ways in which trees and plants can interact with buildings and streetscapes to create better places for us to live.

Strategies and targets will also differ. With an Urban Forest Strategy, there will be greater focus on setting targets for canopy cover and forest diversity which align with the requirements of the built environment. For example, Banyule City Council in its draft Urban

Forest Strategy has proposed a footpath canopy target of 45% in all suburbs by 2050 https://hdp-au-prod-app-ban-shapingbanyule-files.s3.ap-southeast-2.amazonaws.com/7816/7114/6554/Draft_BanyuleUrbanForestStrategy2022_MediumRes.pdf. Melbourne City Council has set a forest diversity target of no more than 5% of any tree species, no more than 10% of any genus and no more than 20% of any one family <https://www.melbourne.vic.gov.au/sitecollectiondocuments/urban-forest-strategy.pdf>. In an urban setting, tree maintenance and soil moisture levels also need to be managed for safety and tree survival much more proactively than in a bush regeneration context.

Conclusion

In a time of climate and ecological crisis, there is an urgent need to protect and enhance the treed environment of Nillumbik. Yet the requirements of maintaining and enhancing the biodiversity of Nillumbik's remnant bushland ecosystems are distinct from the requirements of maintaining and enhancing Nillumbik's urban parks and streetscapes. Both are equally important to the health and wellbeing of the people, plants and wildlife that call Nillumbik home. Both deserve appropriate funding and resources that take into account their separate contexts and needs. We urge Council to allocate funding for a separate Urban Forest Strategy in the upcoming Council Budget of 2023-2024.

Any queries or clarification on this submission can be addressed to [REDACTED]
contactnceat@gmail.com

***Nillumbik Climate Action Team
March 2023***

Mitigation of Risks and Hazards presented by Crowther Ave, Wattle Glen

My name is [REDACTED] my wife [REDACTED] and I moved to [REDACTED] at the start of January 2022, which is on the corner of [REDACTED] and Crowther Ave Wattle Glen.

It became obvious to us that Crowther Ave, which connects to Lower Road, being narrow and and gravel on a steep hill with gutter trenches and no footpaths, is high risk and hazardous to motorists, residents, and pedestrians.

The purpose of this submission is to ensure that as senior representatives of council you are aware of the risks and incidents that have occurred so you can ensure funds are allocated to seal Crowther Ave as a matter of urgency.

There have been some very serious incidents occur on Crowther Ave over the last 12 months that have resulted in personal harm and property damage. Council should be extremely concerned.

I have raised these concerns with various employees and our councillor and have stressed that I believe Crowther Ave must be sealed to protect all.

My concerns are shared by residents and users of Crowther Ave.

This is a list of incidents that I am aware have occurred on Crowther Ave over the last 12 months or so, all serious. I expect there would be many additional incidents that I haven't been made aware of.

1. An elderly resident in Lower Road, lost her footing in the middle of road walking her dog on Crowther Ave, and was concerned a car would come around the corner and run her over;
2. A friend of ours, visited in August 2022, lost her footing on the loose gravel on Crowther Ave, causing her to fall and break her leg in two places as well as sustain a serious gash in her leg, which after 5 months had still not healed. The ambulance attending also had a near miss when it lost traction, and just avoided sliding into the gutter trench after a few anxious moments;
3. A resident's brother was braking downhill on his motorcycle when it suddenly skidded, fell on its side, and injured his ankle and damaged the motorcycle;
4. This same resident also rides a motorbike and is always fearful when riding his motorbike down Crowther Avenue or Lower Road;
5. Our new neighbour was pushing her bike down Crowther (as it's too dangerous to ride down) with her 1-year-old strapped in the child bike seat, when the whole bike skidded and fell. Thankfully the bike seat and helmet protected the child and neither of them were injured, but it was a near miss;
6. Visitors to Crowther Ave, when backing out of driveways continually become stuck, with their wheels losing traction on the gravel road, causing wheel spins and in some cases sliding into the gutter. This has happened to our new neighbour and guests several times ;
7. Just before Xmas 2022, a car was reversing from 27 Mannish Roads driveway, which is on Crowther Ave, lost traction on the loose gravel, the driver lost control and the car careered into the Verandah of number 1 Crowther Ave causing substantial damage. Luckily, there was nobody standing on the path in front of the Verandah otherwise there could have been another serious injury. Imagine if one of the little children of 1 Crowther Ave was on the path when the car careered into the Verandah;
8. Crowther Ave was graded after the incident, where a car slid off the road into the Verandah. Unfortunately, the grading increased the risks to users of Crowther Ave, since a layer of large blue metal was laid on the road as part of grading and seemed lay on the surface rather than being embedded into the surface. As a few residents have stated , " it is now like driving and walking on ball bearings". Shortly after grading, the postie and myself witnessed a tree

- removal truck come down Crowther Ave, apply the brakes to slow down, only to skid on the road surface for metres, uncontrolled;.
9. Another residents also complained to council when Crowther was in bad shape again shortly after it was graded. The grader operator phoned him and said he did everything he could to rectify the road, but it was a matter of too much traffic on the road these days, with delivery trucks and couriers etc. He said it was time Council sealed the road. The resident spoke to council again and reiterated the grader's comment that the road should be sealed.
 10. My son reversed his work vehicle onto Crowther Ave from our driveway, lost traction, causing it slide into the gutter;
 11. Daily vehicles travelling up Crowther Ave loose traction, spin their wheels and accelerate to get up Crowther Ave, which further causes the road to deteriorate and create a bigger risk to all. Uber drivers and delivery vans continually get stuck and struggle to exit Crowther Ave;
 12. Similarly, going down, they apply their brakes and skid uncontrolled;
 13. A resident in Mannish Road, indicated she had lost her footing and landed on her bottom twice walking down Crowther Ave;
 14. A resident was walking with his son and suggested he should walk on the verge since Crowther Ave was not safe to walk on. The verge is also not very safe since it is rough and unmade, unfortunately the son slipped and fell over;
 15. A resident in Crowther Ave indicated his partner won't walk their pet on Crowther Ave due to the concern of losing her footing and potentially incurring an injury;
 16. The postie indicated to me he was always anxious going up and down Crowther Ave;
 17. The APOST Courier service driver, as he handed me a parcel, stated that Crowther Ave is the worst road in his delivery route, he stated he was always concerned that his van would lose traction on the loose gravel and slip into the gutter trenches and what made it worse was the steepness of Crowther Ave;.
 18. A motorist towing a caravan got stuck driving up Crowther Ave when another vehicle was coming down, causing them to lose momentum which caused wheel spin on the gravel and was unable to continue up the hill. Multiple neighbours came to their rescue to help them back out of the street and onto another property to turn around;
 19. The dust levels can become excessive when vehicles travel on Crowther Ave potentially creating health hazards to all. I would image that when council undertakes earth or road works it will continually water the area to control dust, Crowther Ave has serious dust level every day.

I have attached some photos so you can see the impact of some of these incidents.

In my opinion Council is highly exposed to litigation and damages which I expect far exceeds the cost of sealing. Any damages the council incurs is in effect our rates being used to pay legal costs, insurance, and damages when they could be used for other beneficial items.

Any reasonable person would also expect Council to have a duty of care to provide a safe environment for motorists, residents, visitors, and pedestrians in Nillumbik shire.

I have estimated the cost to seal Crowther Ave to be \$50,000 to \$70,000. This figure is based on a quote I had from a preferred supplier to Council, to seal the section of Crowther Ave which borders my property. Crowther Ave is approximately 200 metres long, the estimated cost to seal the 24 metres of my property was \$6000 at \$250 per metre. To seal the length of Crowther Ave is therefore \$250 per metre times 200 metres equalling \$50,000. A small expenditure compared to potential litigation, damages, and maintenance costs.

We moved from the [REDACTED] in Eltham, where over the previous few years and still today, there have been numerous sealed roads dug up and resealed. I expect at a large cost. To a lay person, these roads looked fine and safe, but funds have been allocated to reseat these roads while

funds haven't been allocated to seal Crowther Ave a hazardous unsealed road where many serious incidents have occurred.

To any reasonable person, it wouldn't seem unreasonable to take a small portion of the funds allocated to road upgrades or road renewals to seal Crowther Ave and stop broken legs, cars careering into houses, extreme levels of dust, vehicles skidding uncontrolled and people losing their footing and falling.

As senior representatives, I believe it is your responsibility to provide a safe environment to the residents and users of Crowther Ave and hence I see it as your responsibility to ensure it is sealed as a matter of urgency.

If you, your child, friend, resident, or visitor was injured due to the condition of Crowther Ave, knowing the incidents that have already occurred and knowing you could approve the sealing of Crowther Ave, how would you feel.

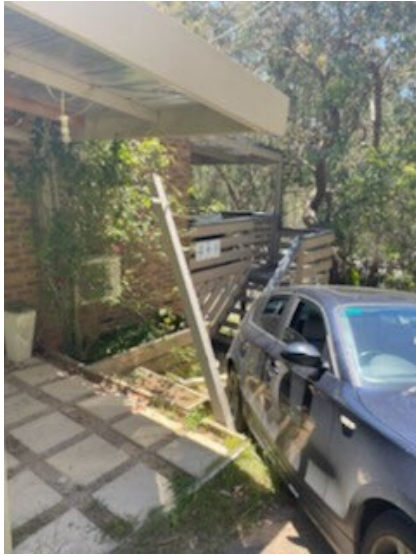
A large black rectangular redaction box covering the signature of the person on behalf of the residents.

On Behalf of the Residents

Broken Leg



Car Reversing into Verandah after losing traction.



Dust Levels



Condition of road 4 Weeks after grading



Condition of road 6 weeks after grading





Allwood Neighbourhood House Incorporated
901 Heidelberg-Kinglake Road, Hurstbridge 3099 VIC
03 9718 2717
admin@allwoodhouse.org.au
ABN 38248146719

Thank you for taking the time to read through our funding submission for Nillumbik Council's 2023-2024 annual budget.

Allwood Neighbourhood House (ANH) was established in 1985 and has recently been through a period of significant change, with the retirement of long-serving manager in January 2022. The past 12 months has seen an interim manager take on a 6 month project to recruit new Committee members, review the operations of the organisation, re-engage community members and connect with new people, and to recruit the new manager.

We are now working to solidify our strategic directions which include a focus on People, Place, Program and organisational Prosperity; themes which echo Council's own Vision of Our People, Our Place, Our Future and Our Council.

ANH's key focus areas are also closely aligned with Council's health and well-being priorities; we have a shared focus on social inclusion and connection, community and climate resilience, gender equity and improving our communities' physical activity and healthy eating patterns.

We are seeking Council's support to contribute to our organisation financially with recurrent funding of \$30,000 p.a. + indexation and a one-off funding allocation of \$150,000 to upgrade facilities and grounds.

Recurrent funding (\$30,000p.a. + indexation)

Given the synergy between ANH's and Council's objectives we are keen to re-establish a formal alliance and request a re-instatement of the recurrent funding which ceased in 2015. This funding was in place for a number of years and was provided to ANH for operational support.

ANH is currently the only Neighbourhood House in the North East Neighbourhood House Network (NENHN) to receive no ongoing financial support from its local Council.

Benchmarking of 34 neighbourhood houses courtesy of NENHN:

Banyule	\$35k per house p.a. + indexation
Whittlesea	\$41k per house p.a.
Yarra	\$83k per house p.a. (average) + 1.5% annual increases
Darebin	\$54k per house p.a. + \$40k additional project funding (Darebin houses are not permitted to apply for additional council grants)

The funding provided to these organisations from their local council enables these neighbourhood houses to maximise their impact and form stronger connections within the local community, effectively contributing to each local Council's vision and objectives. Re-instating this funding would allow Nillumbik Council to leverage on the state funding provided via the Neighbourhood House Coordination Program.

Re-instating this support will allow ANH to reach a critical minimum operating level. (.97 FTE) Operating at this level will enable us to not only respond to, and address community needs effectively, it will also allow us to maximise opportunities for self generated income.

Facilities and Garden upgrade (\$150,000)

ANH Neighbourhood house operates from ANH House; an historic home amongst large gardens in the heart of Hurstbridge owned by Nillumbik Council. ANH Neighbourhood House is the custodian of local history collections and historic buildings including the old bank, lock up and dairy.

Our historic buildings require special care and currently require numerous repairs to enable safe and functional use. These buildings play a key role in our organisations capacity to provide services and activities for the community.

The proposed works to these spaces directly speaks to Council's Place and Space objective; "Maintain places and spaces that strengthen identity, encourage social connection and enjoyment..."

ANH has been proactive in upgrading this council facility through:

- Funding the addition of a deck to complete the wrap-around verandah. Value of \$30,000.
- Funding the renovation of the Old Lock-Up building – replacing weatherboards and rebuilding damaged sections.
- Organising the installation of solar panels and solar tubes through the Greener Houses Growing Greener Neighbourhood project.

We request a lump sum investment into these facilities to ensure we are providing a safe and functional environment for the community, staff and volunteers.

- Old Dairy / Art Space & Old Bank \$50,000 (estimate from Nillumbik facilities team)

- Dairy – Address any remaining OHS concerns and rectify plumbing issues in kitchen. Address plumbing issues in kitchenette. Investigate options for increasing amount of natural light. Any works to the Old Dairy will need to be in accordance with advice from Heritage experts. Create a welcoming and inviting space in Dairy room (previously ANH Knowledge Center) This space is earmarked as a potential location for Hurstbridge Library of Things – a collaborative sustainability initiative by Nillumbik Council and SHiFT.
- Art Space – Address any remaining OHS concerns in Art Space. (e.g. installing additional exit door, address tripping hazards, etc) Install purpose built storage solutions, insulate and line walls & ceiling and install heating and cooling.
- Old Bank – Investigate and rectify roofing issue which is causing/contributing to internal water damage. Repair/replace damaged internal timber lining. Paint interior.

- Boundry fencing upgrade \$50,000

- Address safety and aesthetic concerns by continuing existing picket fence along the Southern, Western and Northern sides of property.
- Install chicane at Southern entry/exit onto Arthurs Creek Road – this is a safety concern as this point has direct exposure to Arthur's Creek Road.
- Repair existing sections of rotten fencing on Main Road and replace existing gate at main entrance off Arthurs Creek Road carpark.
- Incomplete and unsafe fencing is of particular concern due to the safety aspects of running activities involving small children.

- Landscaping & garden upgrade \$50,000

- Review heritage and wildlife aspects of garden and work to sympathetically prune existing plants, remove plants identified as weeds, and add plants where appropriate.
- Improve surface of existing pathways to address accessibility and OHS concerns.
- Upgrade garden edging to define borders between pathways and garden beds thus improving accessibility and ease of ongoing maintenance.
- Prune large shrubs and trees to address OHS and maintenance concerns.
- Investigate potential for creating habitat link to bolster existing wildlife corridors.
- Provide additional opportunities for heritage and wildlife garden education for Nillumbik residents to replicate.

The following images may help to paint a better picture of the required works. I would like to extend an open invitation to you all to come for a tour of ANH (and a cuppa of course). Meet with our community and see our spaces that have so much potential to become the heart of Hurstbridge and a real point of pride for the people of Nillumbik.



Dairy / Art Space

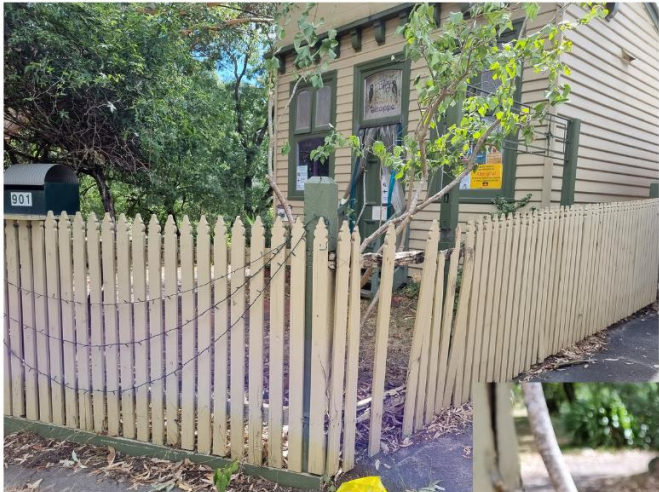
Requires installation of secondary entry/exit door and upgrade of existing door to single action door.



Art space - Address tripping hazard and install purpose built storage solutions.

Upgrade internal lining and install heating/cooling





**Damaged fencing on
Main Road entrance**



**Gap in fence on Arthurs Creek
Road - Proposed site for
chicane. Picket fence
discontinues from this point.**



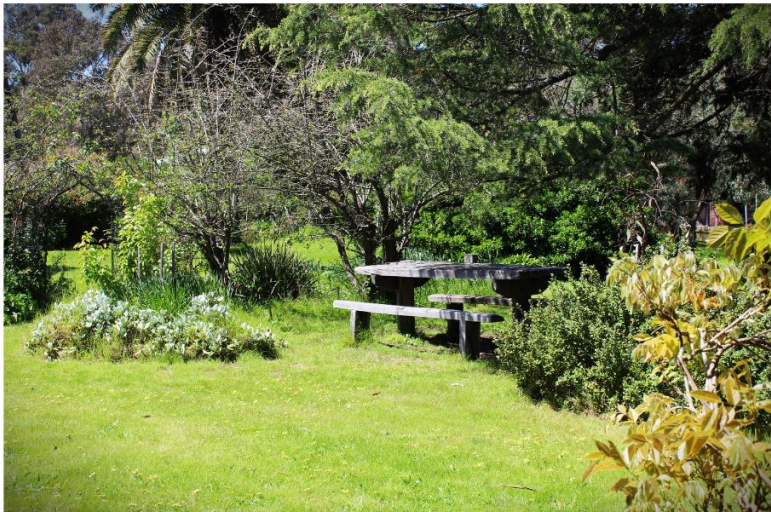


Damaged and broken wire fencing on Southern, Western and Northern sides of property. Unsightly and OHS risk - especially for children.





Allwood's gardens are extensive and used as a public park. Gardens are not currently accessible due to uneven surfaces and undefined edges.



Elements of Allwood's gardens are historically significant. Gardens have potential to be a wildlife link to add to local habitat corridor.



Formal pathways through garden connecting Fergusons Paddock and Main Road (used as a public walkway) are in poor condition with uneven surfaces and multiple tripping hazards.



Embedded rocks in surface of pathways tripping hazard (not loose gravel)



Informal "pathways" through garden are not accessible.



Pathway at end of ramp not accessible.

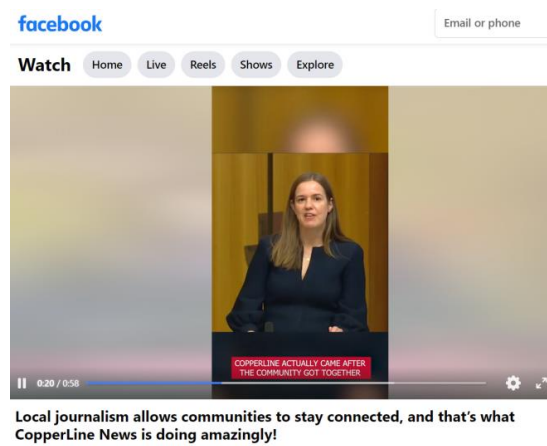


Submission to Nillumbik Council on the draft budget for 2023 – 2024

CopperLine Community Newspaper – submission for funding

CopperLine is Nillumbik's brand-new community newspaper. It has run four editions so far and has already caught the attention of Kate Thwaites MP who in a Federal Parliament speech held it up as example of local journalism allowing communities to stay connected.

[Local journalism allows communities to stay connected, and that's what CopperLine News is doing amazingly! | Kate Thwaites MP | Kate Thwaites MP - Original audio | Facebook](#)



Our aim and objectives

CopperLine's focus is on supporting the local community in Eltham, Eltham North, Montmorency, Research, St Helena and surrounding areas. It fills the need for a Nillumbik-based community paper, which was not being met in the area. It has been received very positively by the community; feedback at our Eltham Festival stand is that it gives people a real sense of connection to place.

Current circulation is 2000 copies delivered by bulk drop to a number of locations in the area; we aim to sustain a monthly edition of 20 pages, with a print run of at least 2000 (and more, as our reputation grows).

Our challenges

A small group of dedicated volunteers coordinate the publication each month and are working hard to find sponsors to help fund the printing costs and other overheads (such as software and regulatory costs) - however in this start-up phase, some ongoing financial support is critical to sustain the paper.

Without ongoing financial support the paper is very limited in its regularity and size. With sufficient budget we aspire to produce a 20 page paper each month, which allows space for community engagement (local sports teams, local heroes and businesses) as well as more expansive pieces of investigative journalism, such as on the local environment (nature reserves, for instance), climate matters and the intersection of biodiversity and local planning laws.

Our financial submission:

CopperLine requests Nillumbik council to provide **\$18,000 over the next three years** so that it can develop & achieve its potential to be a resource of major community value. Funding of **\$6000 per year for three years** would guarantee a minimum print run of six issues per year; this would allow our limited human resources greater scope to engage with a broader range of issues that are important to Nillumbik residents. At the same time we can focus on developing significant sponsorship and advertising, as well as other revenue streams.

Prepared by [REDACTED], CopperLine Vice President and Grants Officer

[REDACTED]

Nillumbik Shire Council - Public submissions to the Draft Budget 2023-2024

Submission on Nillumbik Council Draft Budget 2023-24 Eltham Community Action Group (ECAG) 30 March 2023

As an organisation ECAG has actively existed since 1995. Our interest is in preserving and enhancing the valued characteristics of Eltham.

Tree canopy is one of those characteristics however it is in serious decline in urban areas because of smaller lots being created by subdivision of larger lots and at the same time the size of the built form of dwellings has increased.

Also, we are now facing the issues of climate change and budget priorities need to reflect this to attempt to ensure the liveability of Eltham and Nillumbik for the next generations of residents.

ECAG recognises and welcomes the fact that the issue of climate change caused by global warming has been recognised by Council and is a cornerstone of Council policies such as the Council Plan and the Green Wedge Management Plan and even the Budget.

ECAG is making this Budget submission as we question the financial ability of Nillumbik Council to adequately respond practically to both the effects of climate change and planning aspiration of the residents.

There is nothing equivocal about the latest report by the United Nations Intergovernmental Panel on Climate Change. This is the earth's last chance to avoid climate disaster.

See Attachment 1 for excerpts from the IPCC's latest Assessment Report for Policy Makers (released 20 March 2023)

LOCAL CONTEXT

ECAG recognises and welcomes the fact that the issue of climate change caused by global warming has been recognised by Council and is a cornerstone of Council policies such as the Council Plan and the Green Wedge Management Plan and even the Budget.

- Excess heat hits most at the elderly and Nillumbik has an aging population
- Lack of tree canopy increases the well-known heat island effect on urban areas – especially where the hard surface road infrastructure is the densest.
- The infill development that is now locally happening results in vegetation loss on previously well vegetated blocks.
- Treed land is being cleared to provide space for McMansions or multiple buildings with little room for appropriate tree canopy.
- Council is not keeping records of tree removal in permits that are granted nor any record of trees the Nillumbik Council removes.

Nillumbik Shire Council - Public submissions to the Draft Budget 2023-2024

- As well, aerial images can give some details of the amount of tree loss that occurs regularly BEFORE the permit process starts.

We doubt if Nillumbik Council knows what percentage of urban residential streets have adequate tree cover to combat climate change. However other Councils do, for example:

Hobsons Bay budget 2022-23 Tree Planting - Urban Forest Program. Tree planting and establishment maintenance along streets, pathways and in public open space. To achieve 30 percent canopy cover by 2040, the Urban Forest Program will plant some 8000 to 8500 semi-advanced trees per year.

These last points lead to the question of how can Council adequately budget to ensure sufficient tree cover within urban areas without detailed record keeping?

Council is responsible for maintaining parks and gardens but whilst there is a budget item for Street Tree planting of \$130k it appears that there is no set amount for replacement tree planting in parks.

Tree planting in parks is known as succession planting, that is planting now for the next 50, 100, 150 years in anticipation of the natural death of the trees that we now currently enjoy. We should ensure that such work uses climate change appropriate trees. For succession planting in some parks Council should consider the use of tube stock planting rather than the expensive mature trees that are currently used – but often not adequately maintained.

It is becoming a discussion topic that parks will become refuges in heat waves in future as the climate change effects increase while the economic situation for many people will decrease, energy costs will continue to rise and energy reliability becomes problematic.

Many or even most Melbourne Councils have budgeted for participation in the Urban Forest Program which, surprisingly, Nillumbik is not a Participant.

Whilst we recognise that Nillumbik has a more limited budget and a larger area than most Metropolitan Councils there is a marked difference in the number of trees planted by Nillumbik Council in comparison with other councils.

In fact in relation to their budgets, Nillumbik appears to be the worst performing of the randomly selected councils listed below.

Council	Trees planted 2021-22	Turnover 2021-22 \$'000	Trees planted per \$'000 turnover
Nillumbik	417	202,153	0.002
Manningham	2,500	307,198	0.008
Whittlesea	10,000	602,893	0.017
City of Casey	28,338	1,010,368	0.028
Meri-bek (Moreland)	4188	484,730	0.009

Nillumbik Shire Council - Public submissions to the Draft Budget 2023-2024

Eltham Community Action Group strongly recommends that Nillumbik Council:

- 1: Institutes a system of collation of statistics of the numbers of trees that it issues permits for removal.
- 2: Institutes a system of collation of statistics of the numbers of trees that it removes for whatever reason.
- 3: Institutes a review of existing tree canopy in urban streets in order to budget and plan to improve the tree canopy to 30% as per Hobsons Bay.
- 4: Implements funding for tree planting in all residential parks.
- 5: Expand the Street Tree Planting Program.
- 6: Considers how Council could implement an incentive program (that is adequately staffed by compliance officers) to encourage residents to agree to maintain numbers of trees on their nature strip for an agreed time period of years.

Finally, to implement and achieve any of the above, changes would be needed to the current draft budget.

ECAG hopes that this will occur in the final Budget paper and continue on into the budget process in the following years.

Climate change is here now and, as the IPCC states, if we do not take practical direct action in this decade – even at a Nillumbik Government area level, the future is bleak for our children and grandchildren.

If further clarification is needed, please contact:

[REDACTED]

Nillumbik Shire Council - Public submissions to the Draft Budget 2023-2024

Attachment 1

Excerpts from the IPCC's latest Assessment Report for Policy Makers (released 20 March 2023)

The world will likely exceed 1.5 degrees of warming within a decade and is on track to a catastrophic 3.2 degrees by the end of the century, the report says, unless there are "immediate and deep" cuts in fossil fuel extraction and use.

"Climate change is a threat to human well-being and planetary health. There is a rapidly closing window of opportunity to secure a liveable and sustainable future for all.

Indeed, you don't have to be a scientist to see it. It's in the news every day: melting glaciers and ice shelves, more intense storms, accelerating sea-level rise, dying coral reefs, unprecedented fires, floods, droughts, famine, record heat – the list goes on.

GLOBAL CONTEXT

The IPCC's latest Assessment Report for Policy Makers (released 20 March 2023) beginning with some summary point of your own saying IPCC is saying this is our last chance for all humanity.

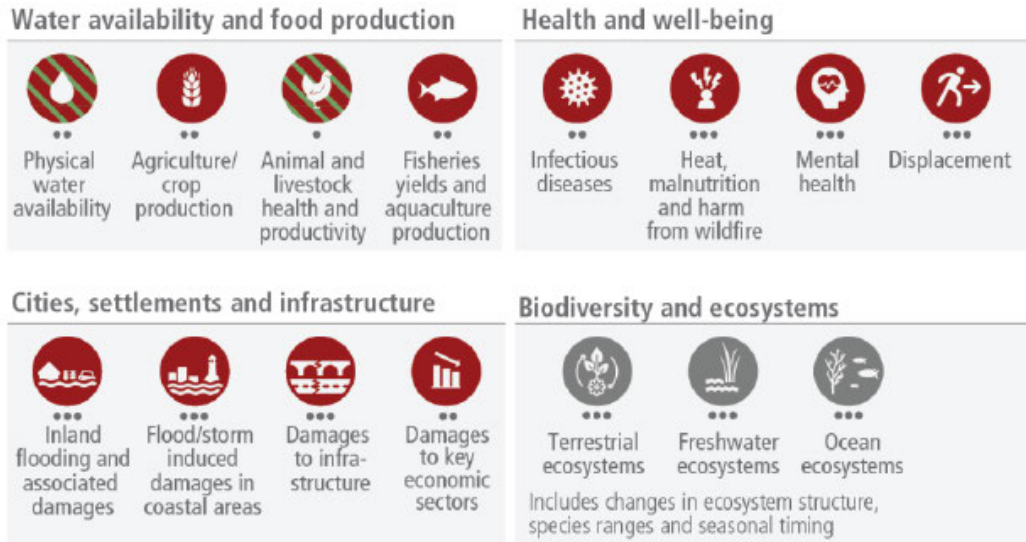
To illustrate that point :

A.1 Human activities, principally through emissions of greenhouse gases, have unequivocally caused global warming, with global surface temperature reaching 1.1°C above 1850–1900 in 2011–2020. Global greenhouse gas emissions have continued to increase, with unequal historical and ongoing contributions arising from unsustainable energy use, land use and land-use change, lifestyles and patterns of consumption and production across regions, between and within countries, and among individuals (*high confidence*).

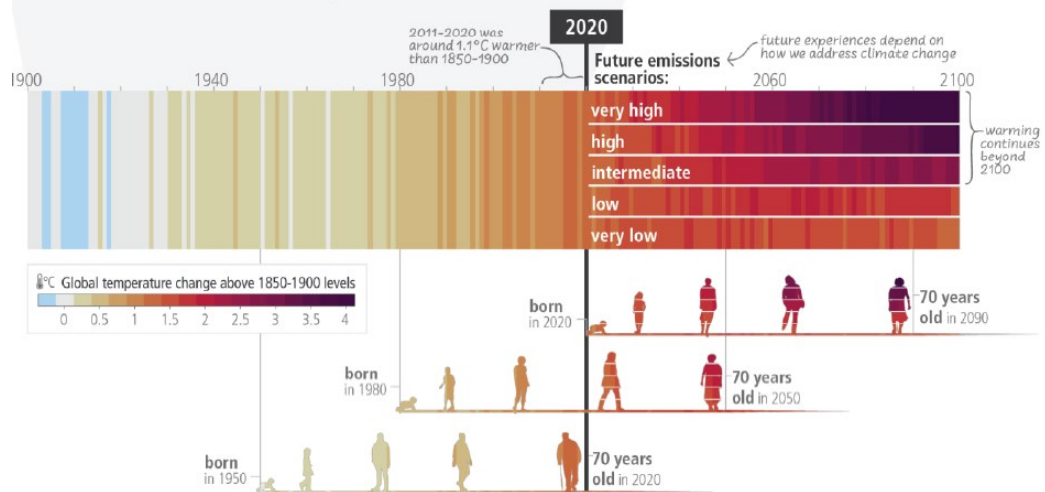
A.2 Widespread and rapid changes in the atmosphere, ocean, cryosphere and biosphere have occurred. Human-caused climate change is already affecting many weather and climate extremes in every region across the globe. This has led to widespread adverse impacts and related losses and damages to nature and people (*high confidence*).*high confidence*).

Adverse impacts from human-caused climate change will continue to intensify

a) Observed widespread and substantial impacts and related losses and damages attributed to climate change



c) The extent to which current and future generations will experience a hotter and different world depends on choices now and in the near-term

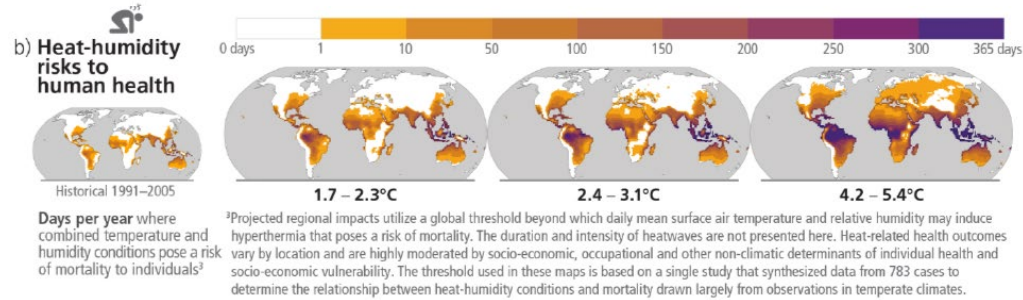


A.3 Adaptation planning and implementation has progressedDespite progress, adaptation gaps exist, and will continue to grow at current rates of implementation. Hard and soft limits to adaptation have been reached in some ecosystems and regions. Maladaptation is happening in some sectors and regions.

A.4 Global GHG emissions in 2030 implied by nationally determined contributions (NDCs) announced by October 2021 make it *likely* that warming will exceed 1.5°C during the 21st century and make it harder to limit warming below 2°C. T....

Future climate change is projected to increase the severity of impacts across natural and human systems and will increase regional differences

Examples of impacts without additional adaptation



C.1 Climate change is a threat to human well-being and planetary health (*very high confidence*). There is a rapidly closing window of opportunity to secure a liveable and sustainable future for all (*very high confidence*)..... The choices and actions implemented in this decade will have impacts now and for thousands of years (*high confidence*).



29 March 2023

Nillumbik Shire Council
34 Civic Drive, Greensborough VIC 308

To whom it may concern,

Replacement Technical Rescue Vehicle

I am writing on behalf of the VICSES Nillumbik unit (the Unit) to request your support in replacing a vehicle that is critical for our ability to provide technical rescue services to the local community.

The Unit covers most of the council's 431 square kilometre area. It assists community members affected by flood, storm, earthquake, and landslide emergencies. It also provides primary industrial, domestic, rail, air and road rescue services, and technical rescue and support to neighbouring communities and beyond.

The Unit receives approximately 1000 Requests for Assistance (RFAs) each year. Given this level of demand, it is vital our rescue vehicles are equipped to handle any emergency situation and can access remote areas of the Shire.

The Unit has a long-standing relationship with the Nillumbik Shire and currently operates two vehicles funded by the Council. One of these, a 2012 Toyota LandCruiser, has reached its service life of 10 years and no longer meets current safety standards. We are writing to request your continued support to fund the vehicle's replacement.

Replacing this 4WD rescue vehicle is essential to ensure that we can continue to provide high-quality rescue services to communities across Nillumbik Shire and beyond. The new vehicle will be equipped with the latest safety features and the capacity to carry all the necessary equipment required for efficient rescue operations. It will provide rapid response to technical rescue events, including, extraction of injured people from rugged and remote areas, rope rescue (people and vehicles down embankments and cliffs), water rescue (people stuck in fast-flowing rivers, flood water, lakes and dams) and other search and rescue responses.

The final replacement cost is expected to be in the range of \$80,000, based on a new-build price of \$120,000 and a sale value of the existing LandCruiser of approximately \$40,000. We believe that this investment in our organisation will provide significant and ongoing benefit to the Nillumbik Shire and neighbouring communities. This new vehicle will ensure that we can continue to provide essential rescue services and respond effectively to emergency situations, helping to keep our community safe and secure. Our organisation has been providing these critical services for nearly 40 years, and we are committed to continuing to do so in the years to come.

We appreciate your consideration of our funding request and look forward to the opportunity to discuss this further with you.

Sincerely,

[Redacted Signature]

VICSES Nillumbik Unit

Victoria State Emergency Service

Victorian Head Office

168 Sturt Street, Southbank, Victoria 3006

Telephone: (03) 9256 9000

Email: vicSES@ses.vic.gov.au | ses.vic.gov.au



Nillumbik Shire Council - Public submissions to the Draft Budget 2023-2024



Introduction

The Green Wedge Protection Group (GWPG) was formally incorporated in 1995, following municipal amalgamations. Less formally, the Group has existed since the early 1970s. The Purposes of the Green Wedge Protection Group include:-

- Working to ensure that residents and public officials of the Shire of Nillumbik act together to protect the environment; develop a high quality urban lifestyle within limited designated areas; and promote a rural lifestyle with sensitive farming and enhanced conservation objectives.
- Ensuring the Green Wedge is the strategic focus of the Shire of Nillumbik as outlined by the Local Government Review Board's final recommendation.
- Providing input to the Shire of Nillumbik and other decision-making bodies on any matter considered relevant to the Green Wedge.

The Green Wedge Protection Group is heavily involved in state and local planning issues, both currently and prior to the group's formal inception, and will continue to negotiate with, and provide advice and direction to, authorities to ensure the intent of our Green Wedges is upheld at all levels of Government, and the values protected.

We thank you for the opportunity to place this submission before Council. Our submission will not be extensive, and we will focus on the Environment.

Submission

As Nillumbik was created as a conservation shire with the Green We4dge as its strategic focus we feel it is essential that this is reflected in the Budget. Within the State Governments "Protecting Victoria's Environment – Biodiversity 2037", they speak of "protecting our natural capital, and in doing so, will increase the resilience of key sectors of the economy." Chapt.3 P.29 reads:

*"...the protection of Victoria's valuable environmental assets – referred to by economists and others as **natural capital** – is critically important for the health and cultural identity of communities, and for key sectors of the economy ranging from agriculture to tourism.*

*The desirability of actively rebuilding Victoria's natural capital has been explored in a report by the Future Economy Group⁸ in association with the Nous Group. Modelling conducted by these groups indicates the competitive edge that Victoria can achieve by fostering a prosperous economy while **caring about liveability and rebuilding natural capital**. The **Future Economy Group estimated that by 2028, healthier natural capital could provide between \$15 billion and \$36 billion in economic benefits for Victoria.***

*On the other hand, **inaction and allowing the continuing decline of natural capital could result in an economic loss of between \$16 billion and \$78 billion**. Recently, a CSIRO Australian National Outlook report⁹ similarly predicted that strong economic benefits would be realised by shifting towards policy settings that deliver co-benefits for both environmental and economic performance."*

So it is critical that Nillumbik meets its obligations to preserving our biodiversity through maintenance and improvement of our natural capital.

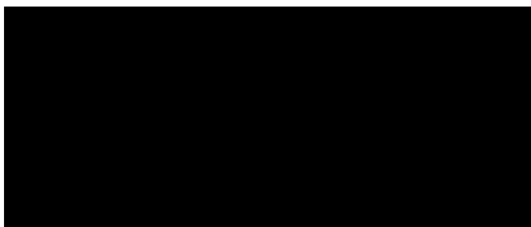
It is becoming increasingly obvious that council is no longer interested in weed eradication. Blackberry is running rife across the shire, as is St Johns wort, Watsonia and Crocosmia, Patersons Curse - to name a few. While roadside weeds are an issue, so are these weeds on private properties. Many of these weeds are declared Noxious or Regionally Controlled under the CALP Act. Thus, it is also essential that council budget to have compliance/Local Laws officers sending out weed control notices for CALP-listed weed species. It appears that the roadside management funding is decreasing continually, and are unable to maintain the level of control that has been accomplished in the past. It is also counterproductive for any roadside management weed control program if adjacent property owners are not maintaining the weeds on their side of the fence, hence the requirement for Local Laws notices to be issued. It should be noted that Nillumbik appears to be the only shire in our area that does not serve notices on ratepayers.

The pie chart provided on Page 9 of the Draft Budget, showing a \$10.68 from every \$100 in council coffers towards Environment, Parks, & Open Space. It would be fantastic if there was a pie chart that was focussed on expenditure and budgeting for environmental works and biodiversity protection/enhancement, OR at least a legend that explains the breakdown of expenditure in each category. It is difficult to understand how much of this ~10% of the budget is to be committed to on-ground protection of our natural assets and maintaining biodiversity especially within conservation reserves and on road reserves, as opposed to expenditure on recreational open space reserves and non-biodiversity-conservation parks.

A commitment, or recommitment, from council towards protecting our biodiversity is sought by the GWPG and our supporters. Our concern regarding a perceived reduction in support for biodiversity has basis, including extending to lack of support for compliance against reported impacts to native vegetation. And simple issues such as the reduction of services for road maintenance crews that has resulted in excess soil and fill generated by rural road resurfacing now being left stockpiled on top of existing vegetation rather than have the excess soil taken away as was historically undertaken. When approached regarding these stockpiles, the road maintenance crews have indicated that their workforce was effectively halved in recent years, leaving them without crews to undertake the soil removal works. These stockpiles not only smother native vegetation, but are sites well suited to extensive weed establishment. And without council commitment to ongoing weed control, there is a "double whammy" impact to our native flora and remnant habitats.

Additionally, the expenditure to defend cases at VCAT that resulted from poor planning decisions, such as the landfill cases in Doreen, add to our concerns especially when council "cries poor" in the face of reacting to non-permitted vegetation removal compliance cases

Regards,



_____, President, Green Wedge Protection Group



Indoor Facility Strategy

The Diamond Valley Basketball Association currently has 6,500 active participants from the ages of 5 through to 70 years old playing basketball, making it the largest sporting organisation in Nillumbik Shire and one of the largest in the state.

The association has seen a growth of 30% participation since return to play from covid in 2021, which sustained through the subsequent lockdowns and lifted restrictions on community sport. Nillumbik Shire has a 6% participation rate of basketball alone. This is the highest participation rate for any LGA in the state of over 500,000 active players of basketball. It also means that around 40% of families have some sort of connection to basketball within the shire.

Team registrations started at 465 in 2021 and grew to 505, then 570 in the subsequent seasons, and is projected to be at over 600 for next season.

Yarrambat Basketball Club alone (which is a member of DVBA) have over 570 members, and no home stadium or even home court. They are scattered across multiple schools and venues just to cater for their training.

With the amazing facilities now on hand at DVSFC, we have an astounding home that caters for most of our basketball activities. However, with the rapid increase in registrations, we are now scattered across 27 courts on a Saturday spread around the Nillumbik, Banyule and Whittlesea region. All courts at Diamond Valley are used for Senior competitions and training the other 6 nights a week, leaving little option for growth.

Seeing the future writing on the wall for lack of court availability, the DVBA reached out to Nillumbik Councils Director of Operations and Infrastructure Hjalmar Philipp in 2022. At the meeting the statistics were laid out and a request for an indoor facility strategy was presented. The response was that DVBA were to drive the project and supply the deeper analytics to help inform the strategy and apply for the funding at the next opportunity.

DVBA have since done that, and the results are included in this submission.

We formally request that funds be allocated in the next budget for an Indoor Facilities Strategy to be carried out by the council, so the council can have accurate and up to date planning for sufficient indoor facilities to cater for basketball for the next 20-30 years.

Thank you



General Manager-

Diamond Valley Basketball Association

COMPETITIONS

Year	2021	2022	2022	2023	2023	2024	2024	2025	2025	2026	2026	2027
Season	Spring	Aut	Spring	Aut	Spring	Aut	Spring	Aut	Spring	Aut	Spring	Aut
Club Teams	409	439	500	570	610	653	698	747	799	855	915	979
Growth		7%	14%	14%	7.00%	7.00%	7.00%	7.00%	7.00%	7.00%	7.00%	7.00%
Games per week	204.50	219.50	250.00	285.00	304.95	326.30	349.14	373.58	399.73	427.71	457.65	489.68
Courts Required	15.73	16.88	19.23	21.92	23.46	25.10	26.86	28.74	30.75	32.90	35.20	37.67
Courts available	18	26	26	29	29	29	29	29	29	29	29	29
Court Deficit	2.27	9.12	6.77	7.08	5.54	3.90	2.14	0.26	-1.75	-3.90	-6.20	-8.67

This refers to the quantity of courts needed to cater for the Junior Domestic competition which this season has 570 teams. There are two seasons in a calendar year.

We can see that if the registration increases at a conservative rate of 7%, we will run out of court space at the available courts for competitions across the Nillumbik Shire by 2025. Note that teams have actually increased by 14% the past two seasons.

TRAINING

Year	2021	2022	2022	2023	2023	2024	2024	2025	2025	2026	2026	2027
Season	Spring	Autumn	Spring	Autumn	Spring	Autumn	Spring	Autumn	Spring	Autumn	Spring	Autumn
Club Teams	409	439	500	570	610	653	698	747	799	855	915	979
Growth		7%	14%	14.00%	7.00%	7.00%	7.00%	7.00%	7.00%	7.00%	7.00%	7.00%
Games per week			500	570	609.90	652.59	698.27	747.15	799.45	855.42	915.30	979.37
Courts Required			500	570	609.90	652.59	698.27	747.15	799.45	855.42	915.30	979.37
Courts available			880	580	580	580	580	580	580	580	580	580
Court Deficit	0.00	0.00	380.00	10.00	-29.90	-72.59	-118.27	-167.15	-219.45	-275.42	-335.30	-399.37

We can see that if the seasons increase at a conservative rate of 7%, we will run out of court space at the available courts across the Nillumbik Shire by next season for training. Note that teams have actually increased by 14% the past two seasons.

Nillumbik Shire Council - Public submissions to the Draft Budget 2023-2024



17th January 2023

Dear Councillor,

I write to you in anticipation of seeking some ongoing funding for Hohnes Road Playhouse (HRP) in your upcoming 2023 budget. Hohnes Road Playhouse has been part of our community for 52 years and it is very clear that it is a much loved space for children 0-5 to play and connect with other children, in a welcoming homely environment, whilst encouraging their growth and development in gross motor skills, STEM and brain development. We also offer another role, which is support to parents and carers who bring their children to our facility, by creating a safe space for them to be able to link in and meet other parents/carers in our community. This is a very important role we provide for parents/carers mental health and socialization, and there has been many people who have provided positive feedback over the years to us in relation to how important a role HRP played with them developing relationships with other parents/carers, and how those relationships have endured for many years and sometime decades afterwards. We have had a lot of people move into the area with small children, especially in the past two years, and they have commented that HRP has been a saving grace for them. In linking in with your Council Health and Wellbeing plan, we seek support in the areas of mental health facilitation, support of 0-5 early years and community connection that Council is committed to providing.

I am seeking a sum of \$50,000 per annum on going, which will help to provide an on going educator for facilitated playgroup sessions a few days a week, as well as some funds for administration costs and help. We are currently a completely volunteer run entity that receives absolutely no funding from anywhere, and our volunteers are the mothers of very small children who attend our facility, and are generally extremely time poor and very tired. We need to be able to have someone qualified who can provide direction on programs we can run for the children, as well as lead them. It is very clear in research into early years development that what our facility provides to this age group, is extremely important. We give families the ability to be with their child whilst they are learning at such a vulnerable and important age bracket, something which a kinder or daycare centre does not provide. It also means it is accessible to ALL families as the cost is extremely small for their family to attend in comparison to kinder/daycare facilities, providing complete inclusion.

We were previously funded by the council of \$30000 per annum which helped with exactly what I am asking for it to be used for this time round. This amount ceased in 2018, after two attempts of council trying to close the facility down. Through the strong support of our community both times, as well as being able to reopen after two tumultuous years of covid lockdowns through the sheer determination of our committee, we have showed how important this facility is to our community and that they want it to stay ongoing. Once funding was revoked, the subsidy we offered to families had to be revoked and this meant that it was too costly to our families to enrol in the facilitated sessions. It was a great loss as many lamented on how much their child/ren enjoyed the sessions with an educator.

In 2022 we had enrolment numbers of 51 in Term1, 87, 77 and 66 respectively in Terms 2,3,4. We have the numbers, and we have updated the space to provide a fresh and engaging area. We just need the financial help to keep the momentum going! I urge you to please vote for giving us some funding in your upcoming budget, and if you have any questions, please do not hesitate to contact

Lot 1 Hohnes Road ELTHAM VIC 3095

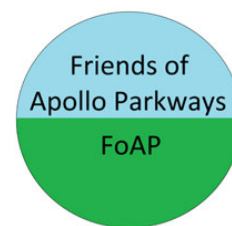
E: hohnesroadchairperson@gmail.com ♦ W: www.hohnesroadplayhouse.com.au

me on [REDACTED].

Warm regards,

[REDACTED]
President
Hohnes Road Playhouse

Nillumbik Shire Council - Public submissions to the Draft Budget 2023-2024



24 January 2023

Friends of Apollo Parkways Inc

To Carl Cowie,

Submission – Budget 23/24

Friends of Apollo Parkways (FOAP) have advocated for retention of Public Open Space and appropriate improvements and upgrades since 2007.

The Civic Drive Precinct Masterplan 2016 was the culmination of workshops, reference groups and submissions by FOAP and the broader community.

Progress to date includes: the Playground with BBQ facilities, terraces and basketball half court, and the levelled Passive recreation Area.

The Masterplan stipulates a number of features that have yet to be provided and will require additional investment to fully realise the objectives.

With reference to the upcoming Budget 23/24 and in alignment with both the Masterplan and the Nillumbik Council Plan 2021-2025, FOAP recommends the funding of:

- **Bench seats, picnic tables, and BBQs at the Passive Recreation Area – these will be well utilised by the thousands of weekly visitors to the busy community hub.**
- **A fitness trail with stations and planting located at the Civic Drive Precinct – these will enhance inclusion and participation along with health and wellbeing for residents of all ages and capabilities.**

FOAP acknowledge implementation of the Masterplan has been a staged approach and the biggest financial outlays have already been made.

Our group are seeking modest improvements, and our priority for 2023/24 is improvements to the Passive Recreation Area.

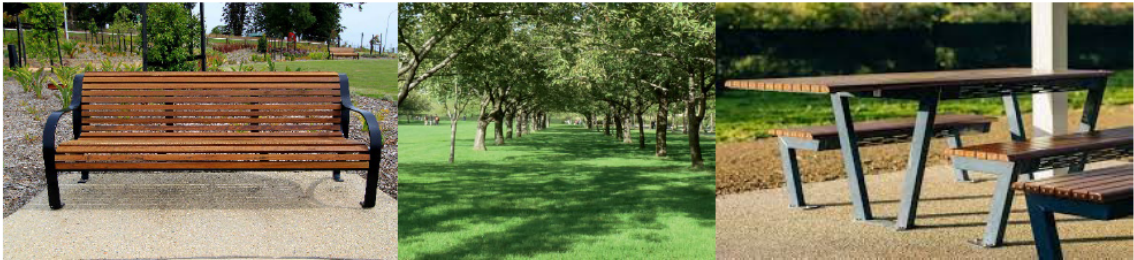
Beyond this period, we propose that a Sensory Garden would be a transformative addition to the Passive Recreation Area, as outlined in more detail in the Attachment to this submission.

The Civic Drive Precinct is a community hub and any investment by the Council for projects to improve the Passive Recreation Area would generate a significant benefit to all visitors and residents.

Nillumbik Shire Council - Public submissions to the Draft Budget 2023-2024

Our priorities in order are:

- **Bench seats, picnic tables, planting**



- **BBQs and shade**



- **Fitness trail and stations**



- **Sensory garden**



I would be grateful if you could forward our submission to the appropriate departments for their consideration.

With thanks,

[Redacted Signature]

President
Friends of Apollo Parkways Inc

Nillumbik Shire Council - Public submissions to the Draft Budget 2023-2024

What is a Sensory Garden?

A sensory garden is a garden where all components are carefully designed to provide maximum and appropriate sensory stimulation. The aim of these gardens is to heighten our awareness of our interaction with nature through our senses.



An example of a sensory garden. <https://www.bartlettarboretum.org/growing-at-the-bartlett-blog/sensory-garden>

Who benefits from a Sensory Garden?

Sensory gardens can be of benefit to *everyone* and can be a wonderful resource for the whole community. However, there are specific individuals and groups who can especially benefit from sensory gardens. These include:

- Dementia sufferers
- Those on the autism spectrum (ASD)
- Individuals with post-traumatic stress syndrome (PTSD)
- Attention Deficit Hyperactivity Disorder (ADHD)
- Individuals with sensory processing disorder (SPD)
- Visually impaired individuals
- Individuals with brain injuries.

Educational Opportunities



There are an enormous variety of ways that the experience can be educational, for example, by including a bush tucker garden, adults and children alike can learn about our native flora and fauna.

For children, gardening can also assist their learning. According to Titman (1994), children describe their ideal school as a place of:

- Doing (physical activities)
- Thinking (intellectual stimulation)
- Feeling (taking care of a place, ownership)
- Being (quiet in noise).

Creating a Sensory Garden

<https://www.rbgsyd.nsw.gov.au/learn/living-learning/gardening-at-home/creating-a-sensory-garden>

Stimulating the Senses

- Sight



To create visual stimulation in your garden, include different colours, varying textures and forms, and areas of light and shade. Remember - it's not just about the flowers! Bark and foliage can have vibrant colours and textures. You can also add a variety of non-living colourful and fun items to your garden.

- Sound



Wind can create a variety of sounds in many plants - like bamboo stems knocking together, grasses rustling etc. Dried leaves can be walked upon for a satisfying 'crunch', and sounds of animals attracted to the garden can fill the air. You could also add elements like wind chimes and running water.

- Taste



There are lots of ways to stimulate tastebuds in a sensory garden. You could use numerous plants such as fruit, vegetables and herbs, many of which are also colourful and aromatic. Some great examples for your garden are various lettuces, kales, cherry tomatoes, strawberries and lilly pillies.

- Texture



Plant textures are not limited to just rough and smooth, they can have a whole variety of interesting textures. Remember bark as well as the leaves and flowers! Examples of different plants to feel in the garden are lambs ears, banksia flowers, rough-barked eucalyptus tree and paperbarks, succulents, ferns and mosses.

- Smell



Smells come from a variety of sources in the garden, not just the flowers. In the case of many culinary herbs the foliage is fragrant, and mulch and soil have a distinct smell. Examples of plants with interesting scents are thyme, oregano, mint species, lavender, rosemary, lemon balm, jasmine, geraniums, gardenias, boronias and prostantheras
