

Planning and Consultation Committee Meeting

to be held at the Civic Centre, Civic Drive, Greensborough
on Tuesday 9 August 2022 commencing at 7:00pm.

Attachments

Carl Cowie
Chief Executive Officer

Thursday 4 August 2022

Distribution: Public

Civic Drive, Greensborough
PO Box 476, Greensborough 3088
Telephone 9433 3111
Facsimile 9433 3777
Website www.nillumbik.vic.gov.au
Email nillumbik@nillumbik.vic.gov.au

Nillumbik Shire Council

Attachments

COM.001/22 Confirmation of Minutes Planning and Consultation Committee Meeting held Tuesday 12 July 2022

Attachment 1 Minutes of the meeting held Tuesday 12 July 2022..... 1

PCC.028/22 Construction of a second dwelling (double storey) to the rear of the existing dwelling at 2 Kirwin Avenue, Eltham

Attachment 1 Aerial Map 15

Attachment 2 Site and Surrounds..... 17

Attachment 3 Plans 19

Planning and Consultation Committee Meeting

held at the Civic Centre, Civic Drive, Greensborough
on Tuesday 12 July 2022 commencing at 7:00pm.

Minutes

Carl Cowie
Chief Executive Officer

Friday 15 July 2022

Distribution: Public

Civic Drive, Greensborough
PO Box 476, Greensborough 3088
Telephone 9433 3111
Facsimile 9433 3777
Website www.nillumbik.vic.gov.au
Email nillumbik@nillumbik.vic.gov.au



Planning and Consultation Committee Meeting Minutes
Nillumbik Shire Council

12 July 2022

Contents		
<hr/>		
1.	Welcome by the Chair	2
2.	Acknowledgement of Country	2
3	Apologies	2
4	Disclosure of conflicts of interest	2
5.	Confirmation of Minutes	2
	Confirmation of Minutes	
6.	Officers' reports	3
	Officers' reports	
	PCC.024/22 Draft Arts and Culture Strategy 2022-26	3
	PCC.025/22 Draft Access, Equity and Inclusion Policy - submissions	5
	PCC.026/22 Intention to lease land to LMS Energy P/L for Solar Farm	7
	PCC.027/22 Concept Plan for Eltham Gateway Open Space	9
7.	Supplementary and urgent business	12
8.	Confidential reports	12
9.	Close of Meeting	12

Planning and Consultation Committee Minutes

12 July 2022

Nillumbik Shire Council

**Minutes of the Planning and Consultation Committee Meeting held
Tuesday 12 July 2022. The meeting commenced at 7:00pm.**

Councillors present:

Cr Richard Stockman	Blue Lake Ward
Cr Karen Egan	Bunjil Ward
Cr Natalie Duffy	Edendale Ward
Cr Peter Perkins	Ellis Ward (Chairperson Planning Matters)
Cr Ben Ramcharan	Sugarloaf Ward (Deputy Mayor)
Cr Frances Eyre	Swipers Gully Ward (Mayor)
Cr Geoff Paine	Wingrove Ward (Chairperson Consultation Matters)

Officers in attendance:

Vince Lombardi	Acting Chief Executive Officer
Hjalmar Philipp	Director Operations and Infrastructure
Sally Johnson	Acting Executive Manager Governance, Communications and Engagement
Corrienne Nichols	Executive Manager Communities
Jeremy Livingston	Executive Manager Business Transformation and Performance
Rosa Zouzoulas	Executive Manager Planning and Community Safety
Nichole Johnson	Manager Community Partnerships
Natalie Town	Senior Communications Officer
Rowena Cairns	Open Space Project Officer
Katia Croce	Governance Lead

1. Welcome by the Chair

2. Acknowledgement of Country

Acknowledgement of Country was read by the Chairperson, Cr Geoff Paine.

3. Apologies

Nil

4. Disclosure of conflicts of interest

Nil

5. Confirmation of Minutes

Confirmation of the minutes of the Planning and Consultation Committee Meeting held on Tuesday 14 June 2022.

Committee Resolution

MOVED: Cr Frances Eyre

SECONDED: Cr Karen Egan

That the Committee (acting under delegation from Council) confirms the minutes of the Planning and Consultation Committee Meeting held on Tuesday 14 June 2022. (**Attachment 1**).

CARRIED UNANIMOUSLY

Planning and Consultation Committee Minutes

12 July 2022

6. Officers' reports

PCC.024/22 Draft Arts and Culture Strategy 2022-26

Item: Consultation Matter
Distribution: Public
Manager: Narelle Hart, Acting Executive Manager Communities
Author: Nichole Johnson, Manager Community Partnerships

Summary

This report notes the public submissions received from the community regarding the draft Arts and Culture Strategy 2022-2026 (the Strategy) (**Attachment 1**).

The draft Strategy sets out a four-year strategic commitment to guide Council in the support and development of arts and culture in Nillumbik Shire.

The draft Strategy has been informed by the Council Vision, Council Plan 2021-2025 and the What We Know: Arts and Culture Strategy 2022-2026 Community Consultation Summary Report (**Attachment 2**) along with additional arts and culture sector reports and data from State, National and International bodies.

The draft Strategy was released for the purposes of public consultation at the Council Meeting on 26 April 2022. It was exhibited from 1 May to the 22 May 2022 (3-week period) five formal submissions were received (**Attachment 3**).

The following person addressed the Committee with respect to this item:

1. Barry Pearce

Committee Resolution

MOVED: Cr Natalie Duffy
SECONDED: Cr Peter Perkins

That the Committee (acting under delegation from Council):

1. Acknowledges and notes the submissions received from community and organisations who provided feedback on the draft Strategy 2022-2026 (**Attachment 3**).
2. Resolves that the confidential un-redacted public submissions on the draft Strategy 2022-2026 (**Attachment 4**) remains confidential in accordance with section 3(1) of the *Local Government Act 2020*.
3. Acknowledges any presentations to the Committee.
4. Considers the matters contained in the submissions and this report during finalisation of the draft Strategy 2022-2026.
5. Requests a further report to be presented at the 27 September 2022 Council Meeting to adopt the final version of the Arts and Culture Strategy 2022-2026.
6. Thanks the submitters for providing Council with feedback on this important document.

CARRIED UNANIMOUSLY

COM.001/22 **Confirmation of Minutes Planning and Consultation Committee Meeting held Tuesday 12 July 2022**
Attachment 1. **Minutes of the meeting held Tuesday 12 July 2022**

Planning and Consultation Committee Minutes

12 July 2022

6. Officers' reports

PCC.025/22 Draft Access, Equity and Inclusion Policy - submissions

Item: Consultation Matter

Distribution: Public

Manager: Narelle Hart, Acting Executive Manager Communities

Author: Nichole Johnson, Manager Community Partnerships

Summary

The Draft Access, Equity and Inclusion Policy (the Policy) (**Attachment 1**) outlines Councils commitment to accessible, equitable and inclusive practice across all council activities.

This report notes the public submissions and outcomes of community engagement for the Draft Policy (**Attachment 2 and 3**).

Council adopted the Draft Policy for the purposes of public consultation at the Council Meeting on 22 March 2022. It was exhibited from 23 March – 24 April 2022 and received seven formal submissions. Submissions received via Participate Nillumbik, including officer recommendations to each of the submissions can be found in **Attachment 2**.

The Draft Access, Equity and Inclusion Policy - Engagement Summary Report (**Attachment 4**) provides a comprehensive summary of the engagement process, feedback and key themes.

A draft updated Policy (**Attachment 5**) includes proposed officer recommendations. The final policy including feedback received from community and Council at the Planning and Consultation Committee will be presented to Council for adoption at the Council Meeting scheduled for 26 July 2022.

Committee Resolution

MOVED: Cr Ben Ramcharan

SECONDED: Cr Peter Perkins

That the Committee (acting under delegation from Council):

1. Acknowledges and notes the submissions received on the Draft Policy (**Attachment 2**) and the Draft Access, Equity and Inclusion Policy - Engagement Summary Report (**Attachment 4**) for the Draft Access, Equity and Inclusion Policy.
2. Resolves that the confidential un-redacted public submissions on the draft Policy (**Attachment 3**) remains confidential in accordance with section 3(1)(f) of the *Local Government Act 2020*.
3. Acknowledges any presentations to the Committee.
4. Considers the matters contained in the submissions and this report during finalisation of the Access, Equity and Inclusion Policy.
5. Requests a further report to be presented at the 26 July 2022 Council Meeting to adopt the final version of the Access, Equity and Inclusion Policy.
6. Thanks the submitters for providing Council with feedback on this important document.

COM.001/22 Confirmation of Minutes Planning and Consultation Committee Meeting held Tuesday 12 July 2022

Attachment 1. Minutes of the meeting held Tuesday 12 July 2022

Planning and Consultation Committee Minutes

12 July 2022

6. Consultation Matters

PCC.025/22 Draft Access, Equity and Inclusion Policy - submissions

7. Notes the draft updated Policy (**Attachment 5**) that will be presented to Council for adoption at the Council Meeting scheduled for 26 July 2022.

CARRIED UNANIMOUSLY

Planning and Consultation Committee Minutes

12 July 2022

6. Officers' reports

PCC.026/22 Intention to lease land to LMS Energy P/L for Solar Farm

Item: Consultation Matter

Distribution: Public

Manager: Hjalmar Philipp, Director Operations and Infrastructure

Author: Natalie Campion, Coordinator Property

Summary

In accordance with Section 115 of the *Local Government Act 2020* (the Act), Nillumbik Shire Council gave notice on 27 May 2022 that it proposes to enter into a lease with LMS Energy Pty Ltd ACN 059 428 474 (LMS) in respect of part of the vacant Council-owned land located at 290-304 Yan Yean Road and 193-213 Heard Avenue, Plenty, known as part of the former Plenty landfill site (Land).

The lease is proposed to be granted on the following terms and conditions:

- **Term of Lease:** an initial term of 25 years with one further term of 5 years.
- **Rent Amount:** \$2,000 plus GST per annum, to be increased by CPI annually
- **Permitted use:** Operating a solar farm.
- **Premises:** on the commencement date of the lease, the premises shall be that part of the Land shown outlined red on the plan shown in **Attachment 1**.

In order for Council to make a decision to proceed (or otherwise) with a new lease agreement, all submissions will be considered in accordance with Section 115 of the Act and Council's community engagement policy.

In response to publicly advertising its intention to enter into a lease agreement with LMS, Council received 5 submissions as shown in **Attachment 2**.

The next step is a decision on the lease at a future Council Meeting.

Committee Resolution

MOVED: Cr Richard Stockman

SECONDED: Cr Ben Ramcharan

That the Committee (acting under delegation from Council):

1. In accordance with section 115 of the *Local Government Act 2020* (the Act), receives and notes the contents of public submissions received in response to the proposed lease agreement for LMS Energy Pty Ltd ACN 059 428 474 (LMS) in respect of part of the vacant Council-owned land located at 290-304 Yan Yean Road and 193-213 Heard Avenue, Plenty, known as part of the former Plenty landfill site (Land).
2. Presents a report to a future Council Meeting regarding the consideration of submissions in accordance with section 115 of the Act.
3. Resolves that the confidential un-redacted public submissions on the lease proposal (**Attachment 3**) remains confidential in accordance with section 3(1)(f) of the *Local Government Act 2020*.

CARRIED UNANIMOUSLY

COM.001/22 **Confirmation of Minutes Planning and Consultation Committee Meeting held Tuesday 12 July 2022**
Attachment 1. **Minutes of the meeting held Tuesday 12 July 2022**

Planning and Consultation Committee Minutes

12 July 2022

6. Officers' reports

PCC.027/22 Concept Plan for Eltham Gateway Open Space

Item: Consultation Matter

Distribution: Public

Manager: Hjalmar Philipp, Director Operations and Infrastructure

Author: Rowena Cairns, Open Space Project Officer

Summary

This report seeks Council endorsement to commence community engagement on a concept plan to revitalise the southern entrance to the Shire on Main Road, Eltham.

The following people addressed the Committee with respect to this item:

1. Denis Johnston – Convenor Southern Gateway Renewal Group
2. Denis Johnston
3. Jim Connor on behalf of Friends of the Diamond Creek - Eltham Lower Park
4. Sue Ormerod on behalf of Friends of Eltham Lower Park

Recommendation

That the Committee (acting under delegation from Council):

1. Notes Major Roads Projects Victoria (MRPV) are contributing funding to revitalise underutilised public land along Main Road Eltham, between Falkiner Street and the Diamond Creek Bridge to recreate a southern gateway to Nillumbik as part of a legacy initiative following the State Government Fitzsimons Lane Upgrade (known as the Eltham Gateway Concept).
2. Supports a collaboration with MRPV to deliver the Eltham Gateway Concept.
3. Endorses the Eltham Gateway Concept Plan (**Attachment 1**) and broader Masterplan (**Attachment 2**) for the purposes of receiving community feedback for exhibition on Participate Nillumbik commencing from 13 July 2022 for a period of 3 weeks.
4. Notes that the full Masterplan (**Attachment 2**) contains elements that are not currently funded and completion is contingent on future funding sources.
5. Considers public submissions at the Planning and Consultation Committee meeting to be held on 9 August 2022.
6. Requests the Director Operations and Infrastructure to work with the relevant landowners (Melbourne Water, Department of Transport and Department of Environment, Land, Water and Planning) to seek approval for the delivery of the concept on their land.
7. Requests the Mayor to write to MRPV to thank them for their funding and support for this community outcome.

Planning and Consultation Committee Minutes

12 July 2022

6. Consultation Matters

PCC.027/22 Concept Plan for Eltham Gateway Open Space

Motion

MOVED: Cr Frances Eyre

SECONDED: Cr Natalie Duffy

That the Committee (acting under delegation from Council):

1. Notes Major Roads Projects Victoria (MRPV) are contributing funding to revitalise underutilised public land along Main Road Eltham, between Falkiner Street and the Diamond Creek Bridge to recreate a southern gateway to Nillumbik as part of a legacy initiative following the State Government Fitzsimons Lane Upgrade (known as the Eltham Gateway Concept).
2. Supports a collaboration with MRPV to deliver the Eltham Gateway Concept.
3. **Notes that Attachments 1 and 2 in report PCC.027/22 will be replaced with a single plan (amended Attachment 1) which has been revised to remove the viewing platform and add additional tree planting on the southern side of Main Road.**
4. **Endorses the amended Attachment 1 for the purposes of receiving community feedback for exhibition on Participate Nillumbik for a period of 3 weeks.**
5. **Notes that following community consultation, the plan may be delivered in stages, subject to funding.**
6. **Considers public submissions at a future Planning and Consultation Committee meeting.**
7. Requests the Director Operations and Infrastructure to work with the relevant landowners (Melbourne Water, Department of Transport and Department of Environment, Land, Water and Planning) to seek approval for the delivery of the concept on their land.
8. Requests the Mayor to write to MRPV to thank them for their funding and support for this community outcome.

THE MOTION WAS PUT TO THE VOTE AND CARRIED AND BECAME THE COMMITTEE RESOLUTION AS FOLLOWS:

Committee Resolution

MOVED: Cr Frances Eyre

SECONDED: Cr Natalie Duffy

That the Committee (acting under delegation from Council):

1. Notes Major Roads Projects Victoria (MRPV) are contributing funding to revitalise underutilised public land along Main Road Eltham, between Falkiner Street and the Diamond Creek Bridge to recreate a southern gateway to Nillumbik as part of a legacy initiative following the State Government Fitzsimons Lane Upgrade (known as the Eltham Gateway Concept).
2. Supports a collaboration with MRPV to deliver the Eltham Gateway Concept.

Planning and Consultation Committee Minutes

12 July 2022

6. Consultation Matters

PCC.027/22 Concept Plan for Eltham Gateway Open Space

3. Notes that Attachments 1 and 2 in report PCC.027/22 will be replaced with a single plan (amended Attachment 1) which has been revised to remove the viewing platform and add additional tree planting on the southern side of Main Road.
4. Endorses the amended Attachment 1 for the purposes of receiving community feedback for exhibition on Participate Nillumbik for a period of 3 weeks.
5. Notes that following community consultation, the plan may be delivered in stages, subject to funding.
6. Considers public submissions at a future Planning and Consultation Committee meeting.
7. Requests the Director Operations and Infrastructure to work with the relevant landowners (Melbourne Water, Department of Transport and Department of Environment, Land, Water and Planning) to seek approval for the delivery of the concept on their land.
8. Requests the Mayor to write to MRPV to thank them for their funding and support for this community outcome.

CARRIED UNANIMOUSLY

Planning and Consultation Committee Meeting Minutes

12 July 2022

7. Supplementary and urgent business

Nil

8. Confidential reports

Nil

9. Close of Meeting

The meeting closed at 8.21pm.

Confirmed: _____

Cr Geoff Paine, Chairperson Consultation Matters

COM.001/22 Confirmation of Minutes Planning and Consultation Committee Meeting held Tuesday 12 July 2022
Attachment 1. Minutes of the meeting held Tuesday 12 July 2022

THIS PAGE WAS LEFT INTENTIONALLY BLANK



**PCC.028/22 Construction of a second dwelling (double storey) to the rear of the existing dwelling at 2
Kirwin Avenue, Eltham**
Attachment 1. Aerial Map

THIS PAGE WAS LEFT INTENTIONALLY BLANK

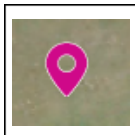
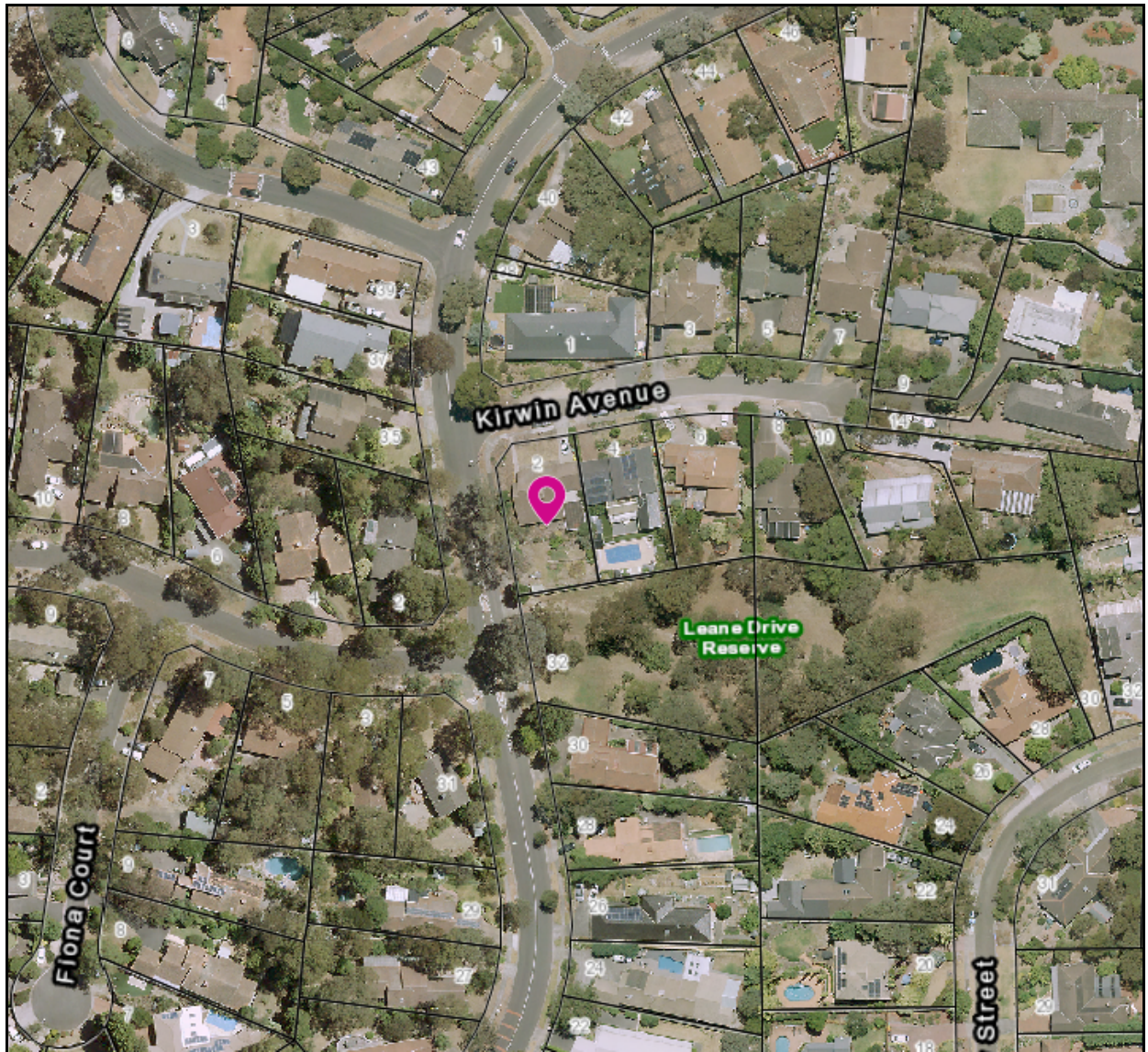


Subject Site and Surrounds

Subject Site: 2 Kirwin Avenue, Eltham

Application Number: 839/2021/03P

Melways Reference: 22C1



Subject Site



Objectors

Nearby Objectors: 17

Total: 25

This material may be of assistance to you, but the State of Victoria and its employees together with Nillumbik Shire Council and its employees, do not guarantee that the publication is without flaw of any kind or is wholly appropriate for your particular purposes and therefore disclaims all liability for any error, loss or consequences which may arise from you relying on any information contained in this material. Contains Vicmap information.
© The State of Victoria, Department of Environment, Land Water & Planning

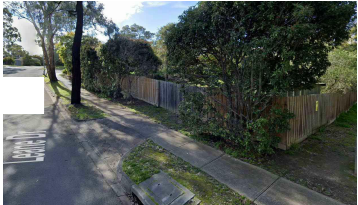
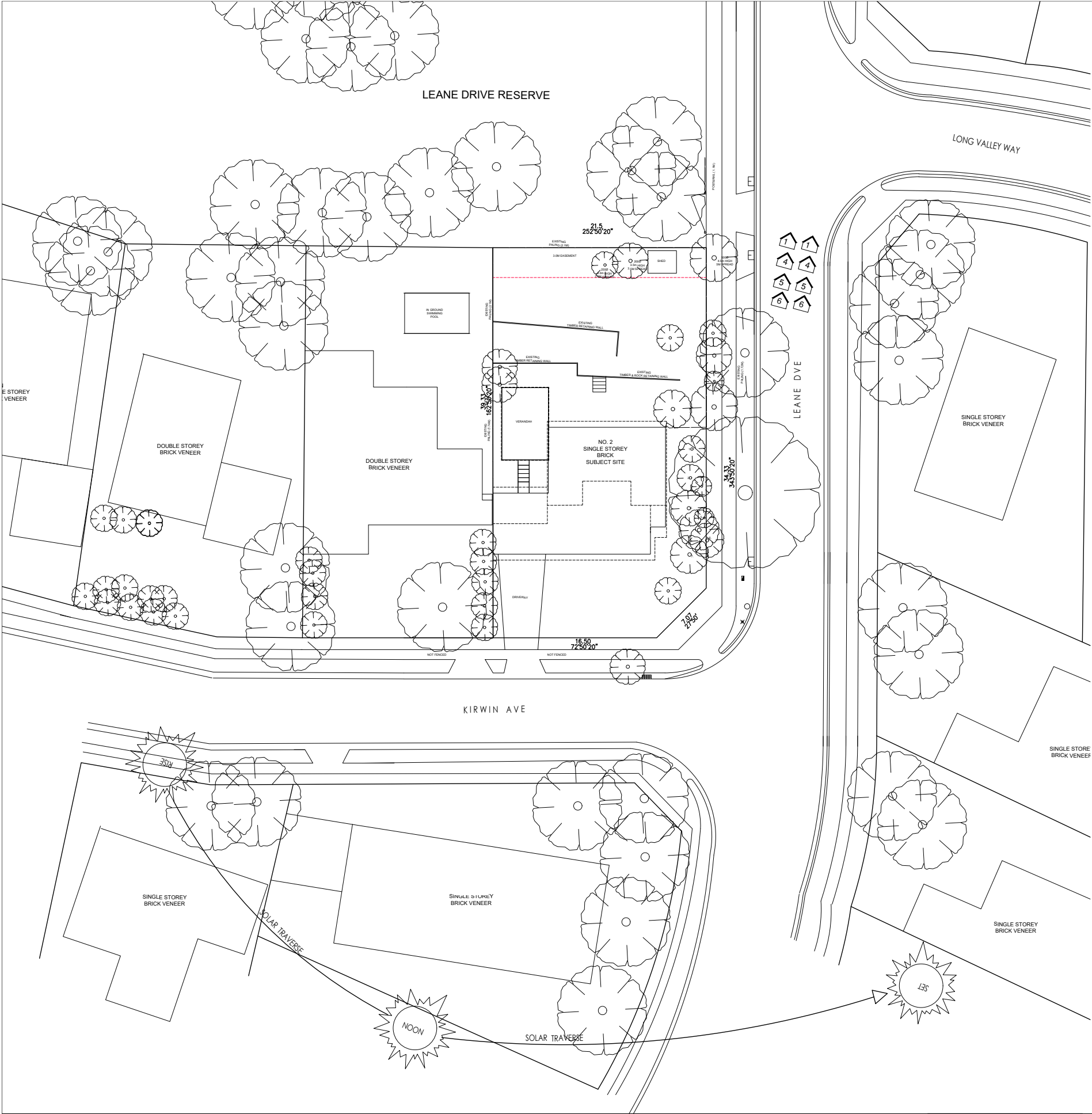


Scale = 1:1557.360

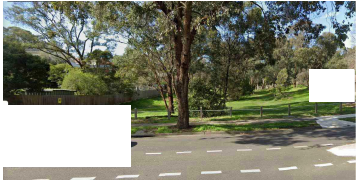
Notes:

Produced By: Planning Business Support
Responsible Officer: Craig Smith

THIS PAGE WAS LEFT INTENTIONALLY BLANK



2 KIRWIN AVE - SUBJECT SITE



LEANE RESERVE



2 KIRWIN AVE - SUBJECT SITE

NEAREST PUBLIC OUTDOOR SPACES:

- 0KM TO LEANE RESERVE
- 800M TO ALAN MARSHALL RESERVE WHICH CONSISTS OF PLAYGROUND AND PUBLIC OPEN SPACE

NEAREST TRANSPORT

- 700 METRE SOUTH FROM SUBJECT SITE TO BUS STOP FOR BUS NO. 578 / 579 TO ELTHAM TRAIN STATION

NEAREST LOCAL SHOPPING

- 2.9KM WALK EAST TO RESEARCH SHOPPING STRIP

LOCAL AMMENITIES:

- 1 2.5km TO ELTHAM EAST PRIMARY SCHOOL
- 2 2.7km TO RESEARCH PRIMARY SCHOOL
- 3 3.6km TO ELTHAM COLLEGE
- 4 2.9km TO ELTHAM COLES
- 5 2.8KM TO ELTHAM STATION
- 6 5.0KM TO ELTHAM SECONDARY COLLEGE

Drawing Issue:

PLANNING ISSUE

MADISON & CO.
16 YANGOORA PLACE
GREENSBOROUGH, VIC, 3088
E. madisonandcodesign@gmail.com
RBP: DP-AD 37979

Madison & Co.
BUILDING DESIGN

Drawing title: NEIGHBORHOOD/ SITE DESCRIPTION	Sheet: 01 of 08
Clients:	Scale @ A1: 1:200
Proposed Residence At: 2 KIRWIN AVE ELTHAM	Job No: 12-21
ISSUE: TP03	Drawn: Checked:
	Date: AUG. 2021

THIS DESIGN IS EXCLUSIVELY OWNED BY MADISON AND CO. AND CANNOT BE REPRODUCED OR COPIED, EITHER WHOLLY OR IN PART, IN ANY FORM (GRAPHIC, ELECTRONIC OR MECHANICAL, INCLUDING PHOTOCOPYING) WITHOUT THE WRITTEN PERMISSION OF MADISON AND CO.

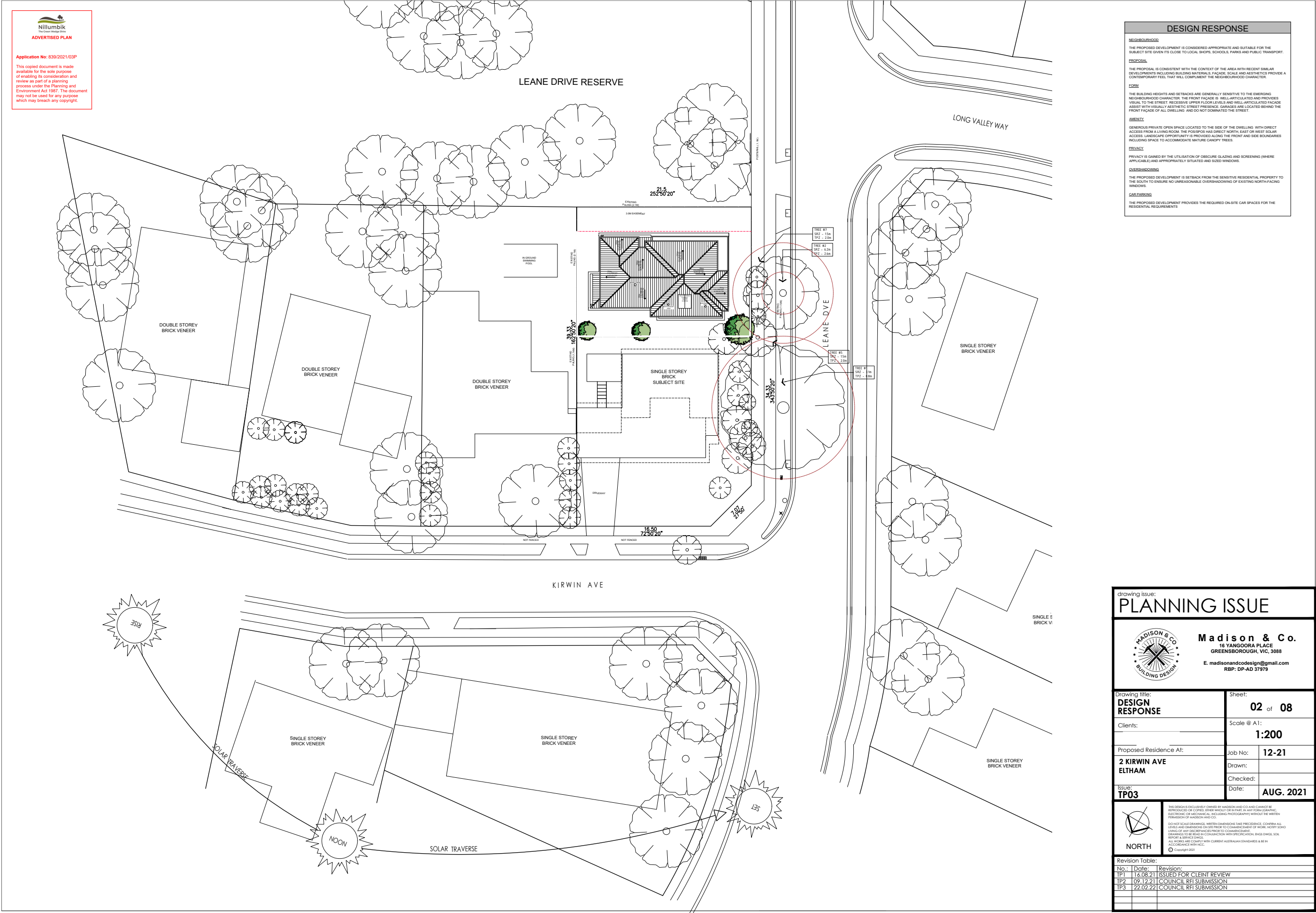
DO NOT SCALE DRAWINGS. WRITTEN DIMENSIONS TAKE PRECEDENCE. CONFIRM ALL LEVELS AND DIMENSIONS ON SITE PRIOR TO COMMENCEMENT OF WORK. NOTIFY SOON. DRAWINGS TO BE READY IN CONJUNCTION WITH SPECIFICATION, ENG'D DWG'S, SOI, REPORT & SERVICE DWGS.

ALL WORKS ARE COMPLY WITH CURRENT AUSTRALIAN STANDARDS & BE IN ACCORDANCE WITH NCC.

© Copyright 2021

NORTH

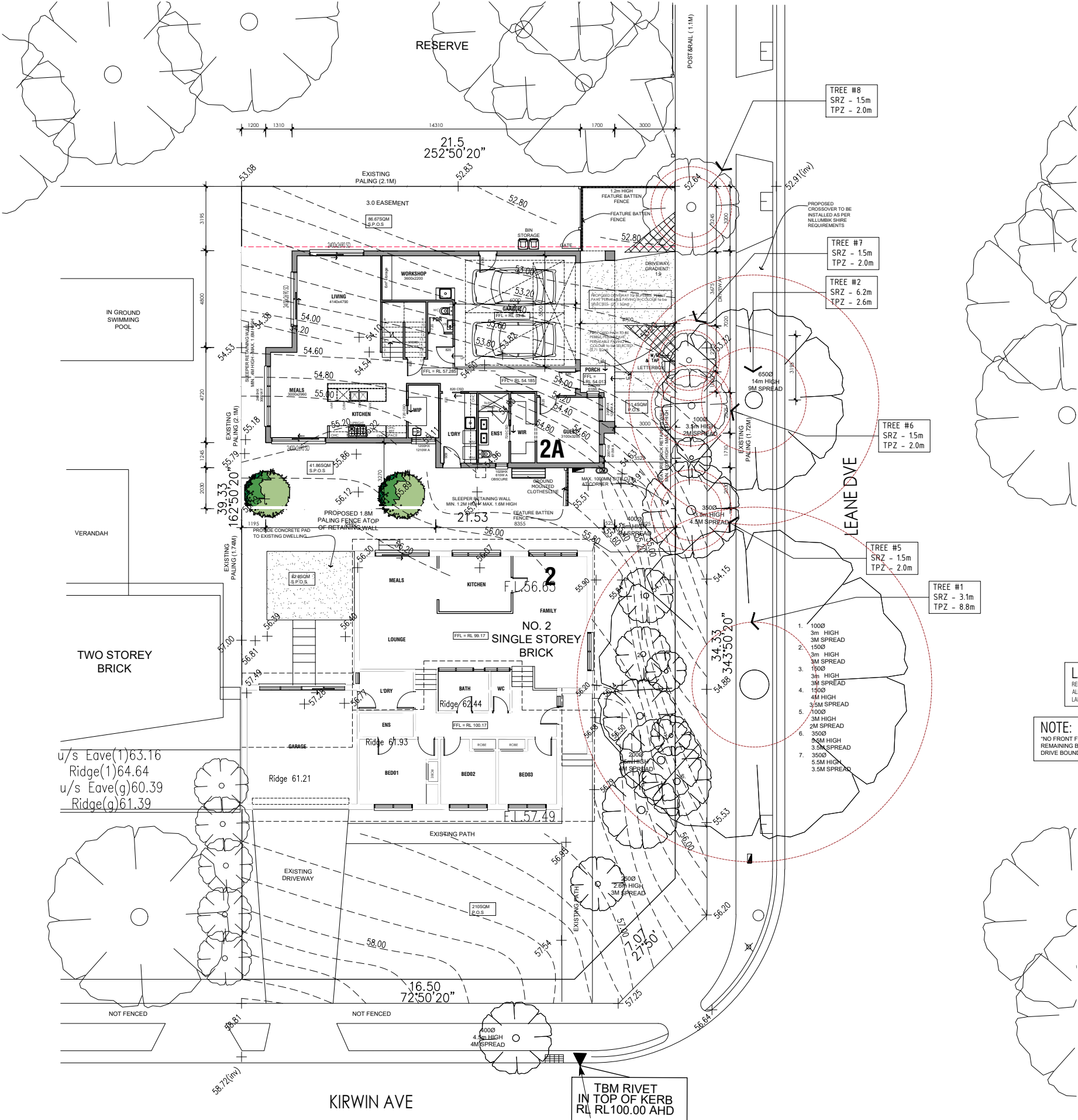
No.:	Date:	Revision:
TP1	16.08.21	ISSUED FOR CLIENT REVIEW
TP2	09.12.21	COUNCIL RPI SUBMISSION
TP3	22.02.22	COUNCIL RPI SUBMISSION



Nilumbik
The Green Building Group
ADVERTISED PLAN

Application No: 839/2021/03P

This copied document is made available for the sole purpose of enabling its consideration and review as part of a planning process under the Planning and Environment Act 1987. The document may not be used for any purpose which may breach any copyright.



NOTE:
ALL LEVELS ARE TO AHD

NOTE:
ALL STRUCTURES (INCLUDING FENCES, LETTERBOXES AND METER BOXES) MUST BE CONSTRUCTED TO A MAXIMUM HEIGHT OF 900MM OR RELOCATED CLEAR OF A SPREAD AREA NEAR THE ACCESS WAY TO ENSURE SAFE SIGHT DISTANCES.

LANDSCAPE NOTE:
REFER TO LANDSCAPE PLAN BY OTHERS FOR ALL PROPOSED CANOPY TREE AND LANDSCAPE DETAILS

UNIT 2A SIZE ANALYSIS		
	TPZ	SRZ
GROUND FLOOR	110.89	11.94
FIRST FLOOR	104.46	11.24
GARAGE	46.58	5.01
PORCH	3	0.32
BALCONY	10.11	1.09
GRAND TOTAL	275.04	29.61

SITE ANALYSIS:

SITE AREA: 833SQM
PROPOSED UNIT 2A BUILDING AREA: 160.47SQM
EXISTING BUILDING AREA: 177.05SQM
IMPERMABLE AREA: 485.86SQM
SITE COVERAGE: MAX. 40.51%
PERMEABILITY: MIN. 41.64%
PRIVATE OPEN SPACE
2 - S.P.O.S = 82.6M² - TOTAL P.O.S = 292.6M²
2A - S.P.O.S = 128.53M² - TOTAL P.O.S = 179.93M²
GARDEN AREA (MIN. 35%): 385m² (46.2%)
- EXCLUDES COVERED AREAS AND GARDEN BEDS LESS THAN 1.0M WIDE

LEGEND

- 2.0M BY 2.5M CORNER SPAY, 50% CLEAN OF VISUAL OBSTRUCTIONS LESS THAN 900MM HIGH.
- CLOTHESLINE
- H.W.S HOTWATER SYSTEM
- RUBBISH/RECYCLE BINS
- DRIVEWAY / HARD PAVING

CANOPY TREES:
PROPOSED CANOPY TREE LOCATIONS.
REFER TO LANDSCAPE DESIGN FOR DETAILS

LANDSCAPE NOTE:
REFER TO LANDSCAPE PLAN BY OTHERS FOR ALL PROPOSED CANOPY TREE AND LANDSCAPE DETAILS

NOTE:
"NO FRONT FENCE" FOR THE REMAINING BALANCE OF LEANE DRIVE BOUNDARY.

PLANNING ISSUE

Madison & Co.
16 YANGOORA PLACE
GREENSBOROUGH, VIC, 3088
E. madisonandcoesign@gmail.com
RBP: DP-AD 37979

Drawing title: GROUND FLOOR SITE PLAN	Sheet: 03 of 08
Clients:	Scale @ A1: 1:100
Proposed Residence At: 2 KIRWIN AVE ELTHAM	Job No: 12-21
Issue: TP03	Drawn:
	Checked:
	Date: AUG. 2021

THIS DESIGN IS EXCLUSIVELY OWNED BY MADISON AND CO. AND CANNOT BE REPRODUCED OR COPIED, EITHER WHOLLY OR IN PART, IN ANY FORM (GRAPHIC, ELECTRONIC OR MECHANICAL), INCLUDING PHOTOGRAPHY, WITHOUT THE WRITTEN PERMISSION OF MADISON AND CO.

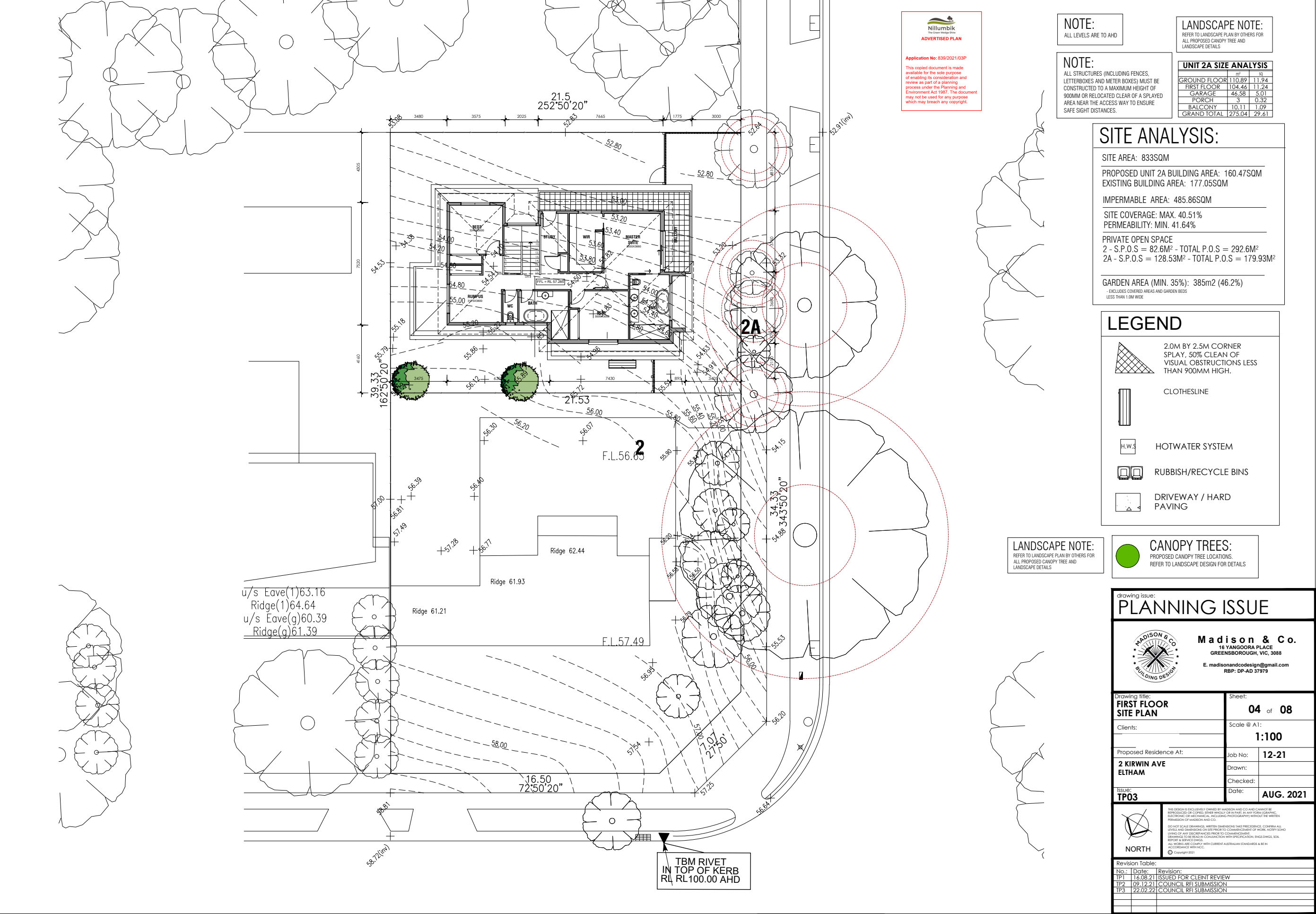
DO NOT SCALE DRAWINGS. WRITTEN DIMENSIONS TAKE PRECEDENCE. CONFIRM ALL LEVELS AND DIMENSIONS ON SITE PRIOR TO COMMENCEMENT OF WORK. NOTIFY SOONER OF ANY DISCREPANCIES PRIOR TO COMMENCEMENT.

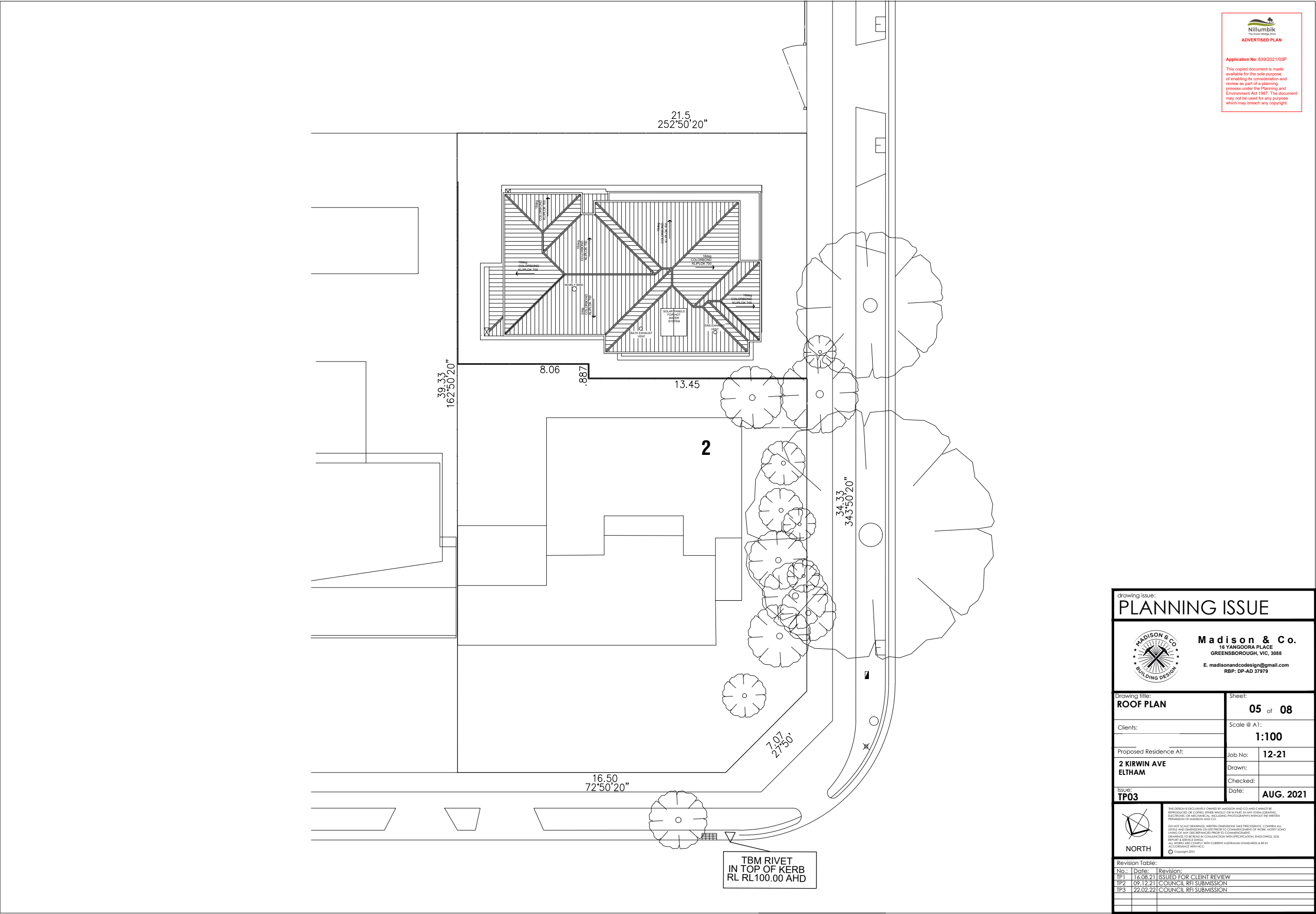
DRAWINGS TO BE READ IN CONJUNCTION WITH SPECIFICATION, ENGS DWG1, SOI, REPORT & SERVICE ORDER.

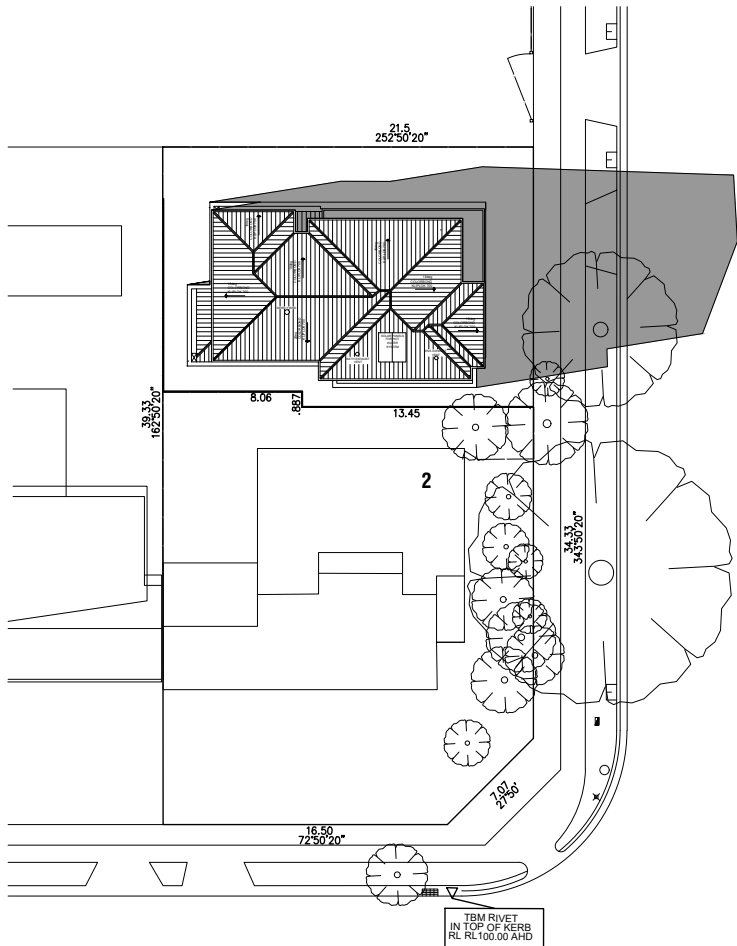
ALL WORKS ARE TO BE COMPLETED IN ACCORDANCE WITH THE CURRENT AUSTRALIAN STANDARDS & BE IN ACCORDANCE WITH NCC.

Copyright 2021

Revision Table:		
No.:	Date:	Revision:
TP1	16.08.21	ISSUED FOR CLIENT REVIEW
TP2	09.12.21	COUNCIL RPI SUBMISSION
TP3	22.02.22	COUNCIL RPI SUBMISSION

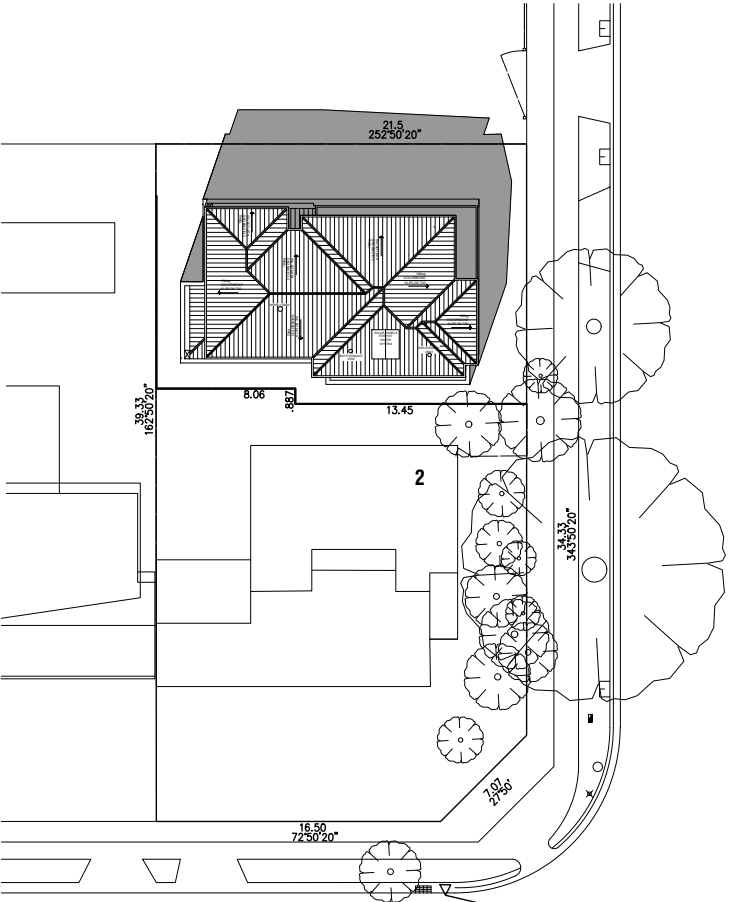






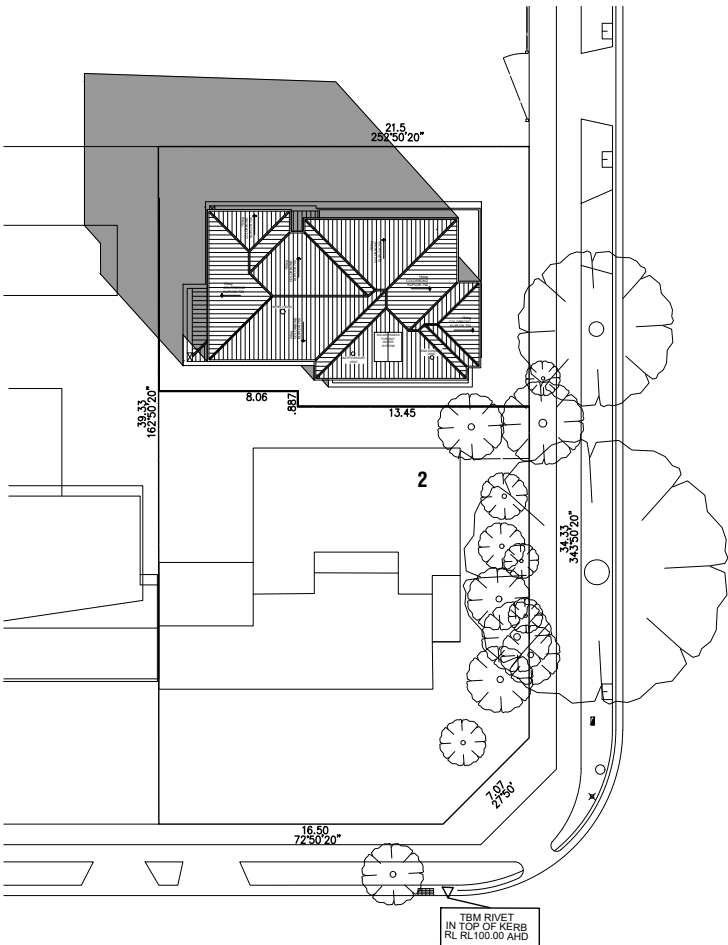
9AM SHADOW DIAGRAM

Scale 1:100



12PM SHADOW DIAGRAM

Scale 1:100

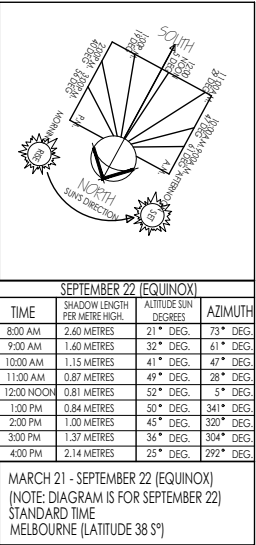


3PM SHADOW DIAGRAM

Scale 1:100



Application No: 839/2021/03P
This copied document is made available for the sole purpose of enabling its consideration and review as part of a planning process under the Planning and Environment Act 1987. The document may not be used for any purpose which may breach any copyright.



MARCH 21 - SEPTEMBER 22 (EQUINOX)
(NOTE: DIAGRAM IS FOR SEPTEMBER 22)
STANDARD TIME
MELBOURNE (LATITUDE 38 S°)

PLANNING ISSUE



Madison & Co.
16 YANGOORA PLACE
GREENSBOROUGH, VIC, 3088
E. madisonandcoesign@gmail.com
RBP: DP-AD 37979

Drawing title:
SHADOW DIAGRAMS

Sheet:
06 of 08

Clients:

Scale @ A1:
1:200

Proposed Residence At:

Job No: 12-21

2 KIRWIN AVE
ELTHAM

Drawn:

Issue:

Checked:

TP03

Date: AUG. 2021



NORTH

Revision Table:

No.:	Date:	Revision:
TP1	16.08.21	ISSUED FOR CLIENT REVIEW
TP2	09.12.21	COUNCIL RPI SUBMISSION
TP3	22.02.22	COUNCIL RPI SUBMISSION



DWELLING 02 -
EXTERNAL COLOURS

LEGEND

DULUX DIEKAU:
- RENDER FINISH

COLORBOND MONUMENT:
- FASCIA & GUTTER
- METAL CAPPINGES
- DOWNPIPES
- KLIPLOK ROOFING
- DESIGNER PANEL CLADDING

POWDERCOAT BLACK:
- WINDOWS / DOOR FRAME
- BALUSTRADING

WALLS
TYPE: RECYCLED FACEBRICK
COLOUR: RED BRICK OR SIMILAR
SUPPLIER: TBC

WALLS / GARAGE DOOR
TYPE: CYPRESS PINE SHIPLAP
CLADDING OR SIMILAR
COLOUR: STAIN FINISH
SUPPLIER: TBC

GLAZING NOTE:
WINDOWS TO BE SCREENED WILL HAVE FIXED OBSCURE GLAZING (NON-OPENABLE) TO A HEIGHT OF 1.7 METRES ABOVE FINISHED FLOOR LEVEL. THE WINDOWS MAY BE CLEAR AND OPENABLE ABOVE 1.7 METRES. ADHESIVE FILM MUST NOT BE USED.

Drawing Issue:
PLANNING ISSUE

Madison & Co.
16 YANGOORA PLACE
GREENSBOROUGH, VIC, 3088
E. madisonanddesign@gmail.com
RBP: DP-AD 37979

Drawing title: ELEVATIONS	Sheet: 07 of 08
Clients:	Scale @ A1: 1:100
Proposed Residence At: 2 KIRWIN AVE ELTHAM	Job No: 12-21
Issue: TP03	Drawn: Checked: Date: AUG. 2021

NORTH

THIS DESIGN IS EXCLUSIVELY OWNED BY MADISON AND CO. AND CANNOT BE REPRODUCED OR COPIED, EITHER WHOLLY OR IN PART, IN ANY FORM (GRAPHIC, ELECTRONIC OR MECHANICAL), INCLUDING PHOTOGRAPHY, WITHOUT THE WRITTEN PERMISSION OF MADISON AND CO.

DO NOT SCALE DRAWINGS. WRITTEN DIMENSIONS TAKE PRECEDENCE. CONFIRM ALL LEVELS AND DIMENSIONS ON SITE PRIOR TO COMMENCEMENT OF WORK. NOTIFY SOON. LATEST OF ANY DISCREPANCIES PRIOR TO COMMENCEMENT.

DRAWINGS TO BE READ IN CONJUNCTION WITH SPECIFICATION, ENDS DWG1, DWG2, REPORT & SERVICE ORDER.

ALL WORKS ARE COMPLY WITH CURRENT AUSTRALIAN STANDARDS & BE IN ACCORDANCE WITH NCC.

Copyright 2021

Revision Table:		
No.:	Date:	Revision:
TP1	16.08.21	ISSUED FOR CLIENT REVIEW
TP2	09.12.21	COUNCIL RPI SUBMISSION
TP3	22.02.22	COUNCIL RPI SUBMISSION

